

Matrox **Design Assistant X** >>>

Intuitive, versatile, and extendable integrated development environment for machine vision applications



Overview

Flowchart-based vision software

Matrox Design Assistant® X¹ is an integrated development environment (IDE) for Microsoft® Windows® where vision applications are created by constructing an intuitive flowchart instead of writing traditional program code. In addition to building a flowchart, the IDE enables users to design a graphical web-based operator interface for the application.

Matrox Design Assistant X can operate independent of hardware, allowing users to choose any computer with CoaXPress®, GigE Vision®, or USB3 Vision® cameras and get the processing power needed. Image capture from CoaXPress cameras happens with the use of a [Matrox Rapixo CXP](#) frame grabber. Matrox Design Assistant X works with multiple cameras all within the same project, or per project running concurrently and independently from one another, platform permitting. This field-proven software is also a perfect match for a Matrox Imaging [vision controller](#) or [smart camera](#). Matrox Design Assistant X offers the freedom to choose the ideal platform for any vision project.

Why a flowchart?

The flowchart is a universally accessible, recognized, and understood method of describing the sequence of operations in a process. Manufacturing engineers and technicians in particular have all been exposed to the intuitive, logical, and visual nature of the flowchart.

Matrox Design Assistant X at a glance

Solve machine vision applications efficiently by constructing flowcharts instead of writing program code

Choose the best platform for the job within a hardware-independent environment that supports Matrox Imaging [smart cameras](#) and [vision controllers](#) and third-party PCs with CoaXPress, GigE Vision, or USB3 Vision cameras

Tackle machine vision applications with utmost confidence using field-proven tools for analyzing, classifying, locating, measuring, reading, and verifying

Leverage deep learning for visual inspection through image classification and segmentation tools

Use a single program for creating both the application logic and operator interface

Work with multiple cameras all within the same project or per project running concurrently and independently from one another, platform permitting

Interface to [Matrox AltiZ](#) and third-party 3D sensors to process and analyze depth maps and point clouds

Rely on a common underlying vision library for the same results with a Matrox Imaging [smart camera](#), [vision system](#), or third-party computer

Maximize productivity with instant feedback on image analysis and processing operations

Receive immediate, pertinent assistance through an integrated contextual guide

Communicate actions and results to other automation and enterprise equipment via discrete Matrox I/Os, RS-232, and Ethernet (TCP/IP, CC-Link IE Field Basic, EtherNet/IP™, Modbus®, OPC UA, and PROFINET®, and native robot interfaces)

Test communication with a programmable logic controller (PLC) using the built-in PLC interface emulator

Maintain control and independence through the ability to create custom flowchart steps

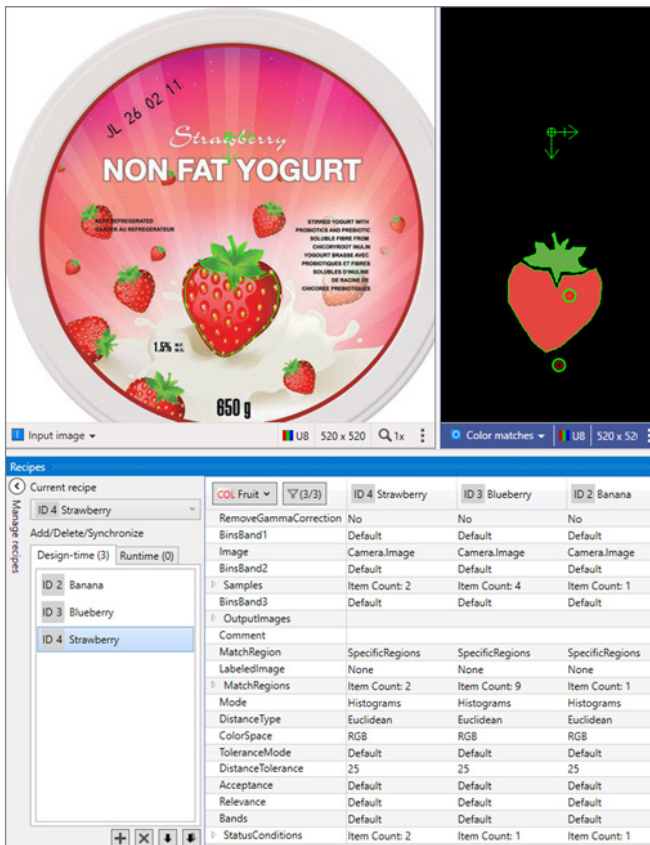
Increase productivity and reduce development costs with Matrox Vision Academy [online](#) and [on-premises](#) training

Protect against inappropriate changes with the Project Change Validator tool

Overview (cont.)

Application design

Flowchart and operator interface design are done within the Matrox Design Assistant X IDE hosted on a computer running 64-bit Windows. A flowchart is put together using a step-by-step approach, where each step is taken from an existing toolbox and is configured interactively. Inputs for a subsequent step—which can be images, 3D data, or alphanumeric results—are easily linked to the outputs of a previous step. Decision-making is performed using a flow-control step, where the logical expression is described interactively. Results from analysis and processing steps are immediately displayed to permit the quick tuning of parameters. A contextual guide provides assistance for every step in the flowchart. Flowchart legibility is maintained by grouping steps into sub-flowcharts. A recipes facility enables a group of analysis and processing steps to have different configurations for neatly handling variations of objects or features of interest within the same flowchart.



In addition to flowchart design, Matrox Design Assistant X enables the creation of a custom, web-based operator interface to the application through an integrated HTML visual editor. Users alter an existing template using a choice of annotations (graphics and text), inputs (edit boxes, control buttons, and image markers), and outputs (original or derived results, status indicators, and charts). A filmstrip view is also available to keep track of and navigate to previously analyzed images. The operator interface can be further customized using a third-party HTML editor.

Latest key additions and enhancements

OPC UA communication for interaction with manufacturing systems as per Industry 4.0

3D display and meshing to suitably visualize 3D scan data

New steps to crop 3D data and calculate volume

High dynamic range (HDR) step to generate an image with enhanced contrast

Charts for operator interface to graphically show results including trends

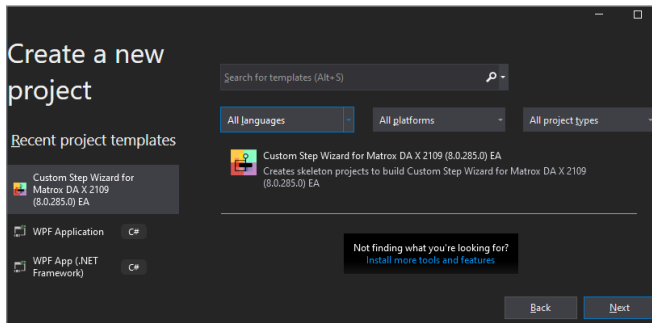
Runtime execution monitoring and reporting to simplify project troubleshooting and optimization

Support for Matrox Iris GTX smart cameras

Overview (cont.)

Custom flowchart steps

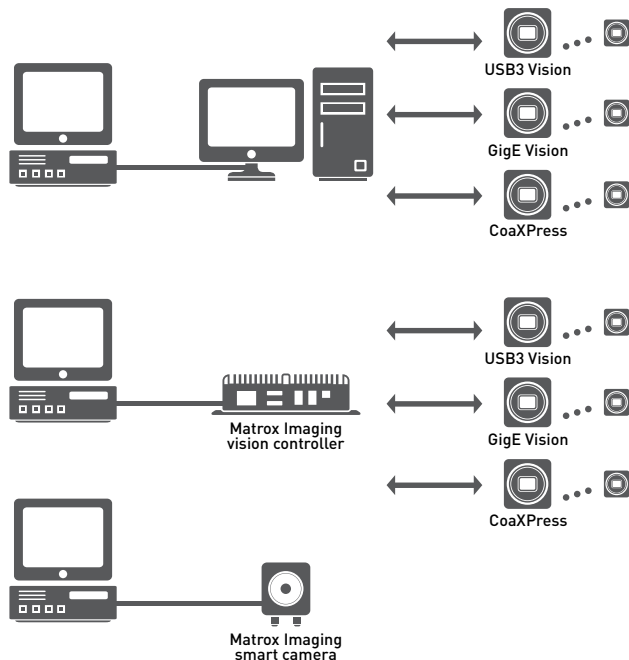
Users have the ability to extend the capabilities of Matrox Design Assistant X by way of the included Custom Step software development kit (SDK). The SDK, in combination with Microsoft Visual Studio® 2019, enables the creation of custom flowchart steps using the C# programming language. These steps can implement proprietary analysis and processing, as well as proprietary communication protocols. The SDK comes with numerous project samples to accelerate development.



Custom Step SDK

Application deployment

Once development is complete, the project—with flowchart(s) and operator interface(s)—is deployed either locally or remotely. Local deployment is to the same computer or Matrox Imaging vision controller as was used for development. Remote deployment is to a different computer, including Matrox Imaging vision controllers, or a Matrox Imaging smart camera.



Deployment options

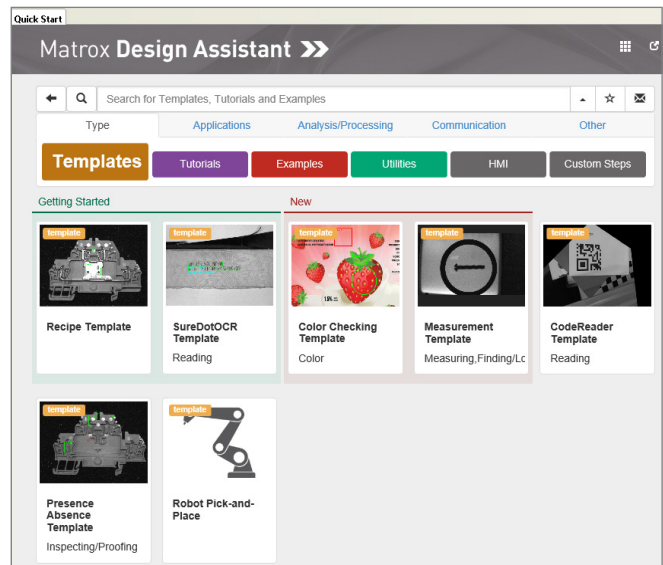
Project templates for quicker start-up

Matrox Design Assistant X includes a series of project templates and video tutorials to help new developers get up and running quickly.

These templates serve as either functional applications or application frameworks intended as a foundation for a target application. Templates also permit dynamic modifications, allowing users to tweak functionality at runtime and immediately see the outcome of any adjustments. The project templates address typical application areas, with examples for:

- Barcode and 2D code reading
- Measurement
- Presences/absence
- Recipes
- Robot guidance (pick-and-place)
- Dot-matrix text reading ([SureDotOCR®](#))
- Color checking

More information on templates can be found on the Quick Start page of Matrox Design Assistant X software.



Project templates

Integrated Development Environment

Customizable developer interface

The Matrox Design Assistant X user interface can be tailored by each developer. The workspace can be rearranged, even across multiple monitors, to suit individual preferences and further enhance productivity.

The screenshot displays the Matrox Design Assistant X interface with several key components:

- Flowchart:** A vertical flowchart on the left shows steps: Loop, CAM Camera, CIRC CircleFinder, VOL3D Volume3D, INTG CheckIfBroken, STA Status, and P. The 'VOL3D Volume3D' step is highlighted.
- 3D Data:** Two 3D visualizations of a point cloud are shown. The left one is a cropped point cloud, and the right one shows a wireframe mesh overlaid on the point cloud. Camera parameters are displayed: Azimuth 56°, Elevation 26°, Roll 0°.
- Annotations:** A panel on the right lists 'VOL3D Volume3D' with sub-items: Reference, Reference, Regions, and Crop regions. A 'Draw...' checkbox is checked.
- Quick Access:** A panel on the far right provides contextual documentation for the 'Crop region' step, explaining that the surface is composed of points from a point cloud or depth map and that the crop is based on 2D regions on a 3D shape.
- Step Log:** A panel below the Quick Access shows the execution flow: FlowchartStart, Loop (20), Camera (Image4.mbufc), CircleFinder, and Volume3D.
- Configuration:** A dialog box for 'Volume3D' is open, showing settings for 'Enabled crop region', 'Region mode' (Shape 3D selected), 'Shape' (Cylinder3D), and 'Fixture 2D' (CircleFinder.Occurrences(1).Fixture).
- Results:** A table at the bottom right shows execution results for 'WarningGaps'.

Annotations with callout boxes highlight the following features:

- View flowchart with images/3D data or operator interface layout
- Get quick access to contextual documentation
- Configure each step through a dialog (or directly on image/3D data)
- View step execution results in tabular form (or directly on image/3D data)
- Track flowchart execution

Operator View

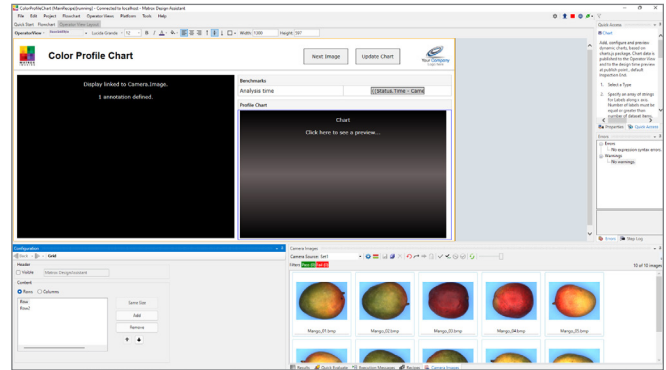
Operator interface viewable anywhere

The web-based operator interface, or Operator View, can be accessed locally or remotely through a HTML-5-capable web browser such as Google Chrome™ and Chromium, Mozilla Firefox®, and Microsoft Internet Explorer® and new Edge. Local viewing is done on the same computer or Matrox Imaging vision controller as was used for development. Local viewing is also available with a Matrox Imaging smart camera through a simple touch screen connected to its video output and USB interface, which eliminates the need for an additional computer. Remote viewing is done from any computer, including dedicated Human Machine Interface (HMI) or touch-panel PCs.

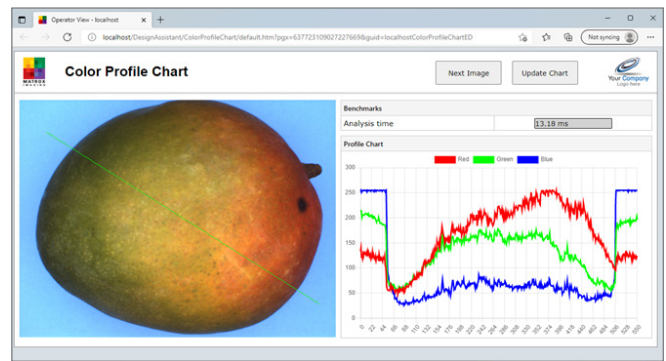
A stand-alone HMI application can be created using Microsoft Visual Studio to run on the local or a remote computer as an alternative to the web-based operator interface.

Security features

Access to specific Operator Views can be made to require user authentication (i.e., username and password) so only authorized personnel can modify key parameters of a running project. A project can be locked to a specific Matrox Imaging smart camera or vision controller when deployed, preventing it from running on an unauthorized platform. A project can also be encrypted during deployment to a platform, insuring that the project cannot be read or changed by unauthorized users. Projects locked to a platform are automatically encrypted.



Design a customized Operator View



Resulting Operator View as seen in a web browser

Field-Proven Vision Tools

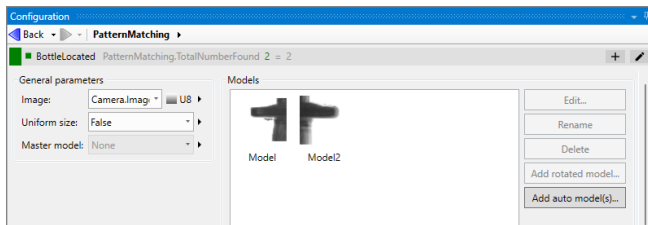
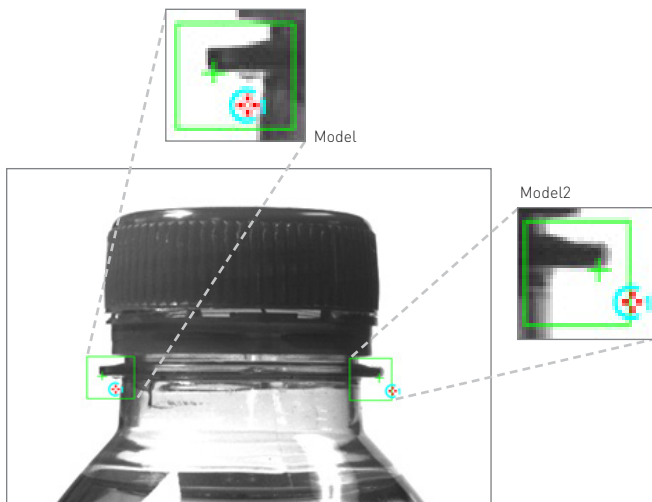
Image analysis and processing

Central to Matrox Design Assistant X are flowchart steps for calibrating, enhancing, and transforming images; locating objects; extracting and measuring features; classifying and segmenting images; reading character strings; and decoding and verifying identification marks. These steps are designed to provide optimum performance and reliability.

Pattern recognition steps

Matrox Design Assistant X includes two steps for performing pattern recognition: PatternMatching and ModelFinder. These steps are primarily used to locate complex objects for guiding a gantry, stage, or robot, or for directing subsequent analysis and processing steps.

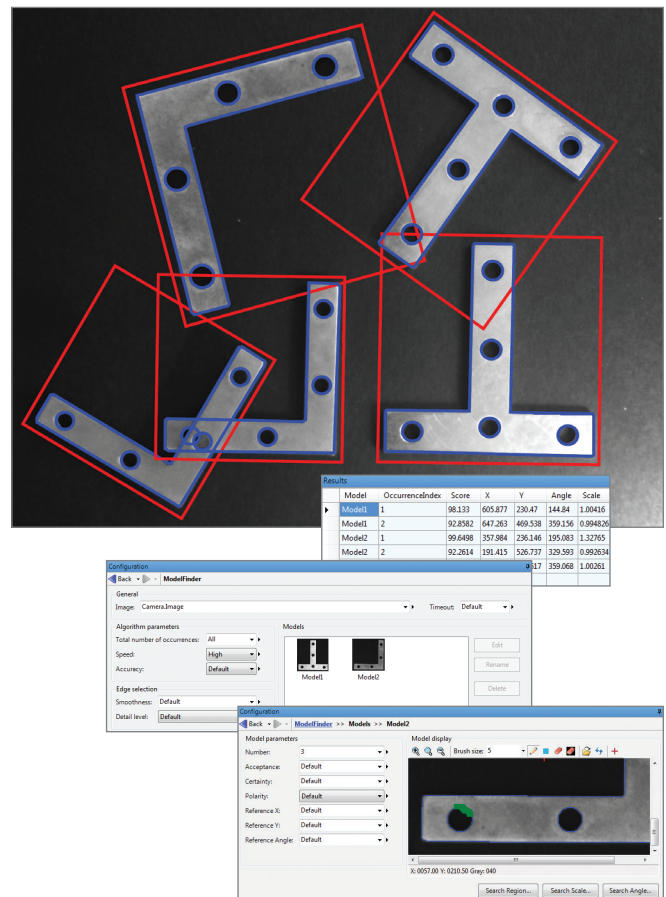
The PatternMatching step finds a pattern by looking for a similar spatial distribution of intensity. The step employs a smart search strategy to quickly locate multiple patterns, including multiple occurrences, which are translated and slightly rotated. The step performs well when scene lighting changes uniformly, which is useful for dealing with attenuating illumination. A pattern can be trained manually or determined automatically for alignment. Search parameters can be manually adjusted and patterns can be manually edited to tailor performance.



PatternMatching step

PatternMatching step

The ModelFinder step employs an advanced technique to locate an object using geometric features (e.g., contours). The step finds multiple models, including multiple occurrences that are translated, rotated, and scaled. Model Finder locates an object that is partially missing and continues to perform when a scene is subject to uneven changes in illumination, thus relaxing lighting requirements. A model is manually trained from an image and search parameters can be manually adjusted and models can be manually edited to tailor performance.



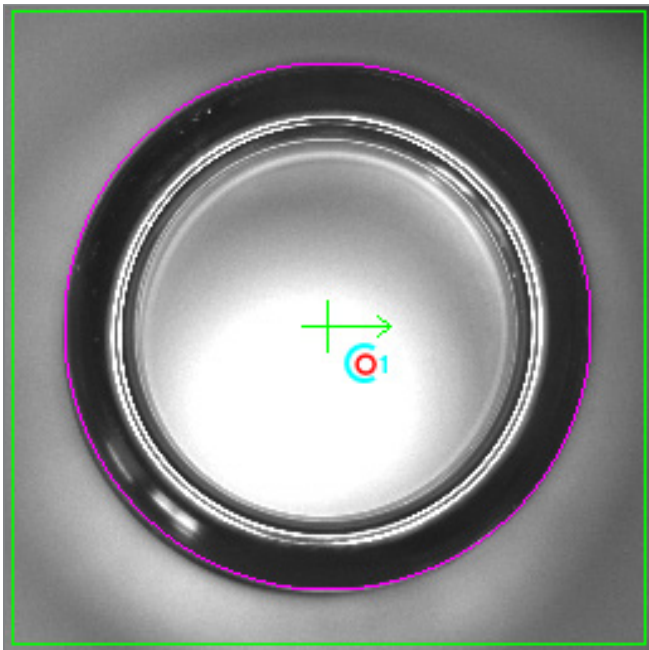
ModelFinder step

Field-Proven Vision Tools (cont.)

Shape finding steps

Matrox Design Assistant X includes dedicated steps for finding circles, ellipses, rectangles, and line segments. Circle finding is defined by the anticipated radius, the possible scale range, and the number of expected occurrences. Ellipse and rectangle finding are defined by the anticipated width and height, the possible scale and aspect ratio ranges, and the number of expected occurrences. Line segment finding is defined by the anticipated length and the number of expected occurrences. Continuous and broken edges lying within an adjustable variation tolerance produce the requested shape.

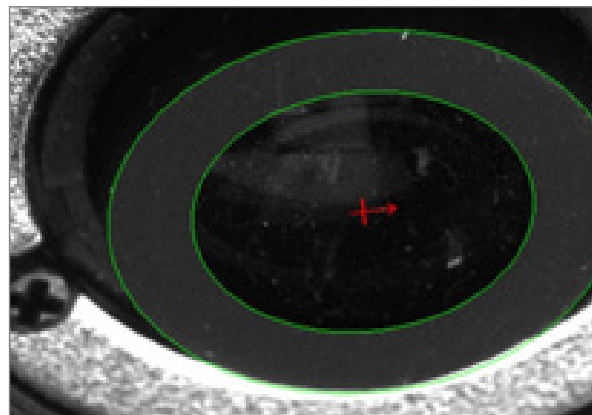
The shape-finding step computes the total number of found occurrences; for each occurrence, the tool can provide the center position and score relative to the reference. It can also give the radius and scale for circles; the angle, aspect ratio, width, and scale for ellipses and rectangles; and the start and end positions as well as the length for line segments. These specialized modes are generally faster and more robust at finding the specific shapes than generic pattern recognition.



CircleFinder step



RectangleFinder step

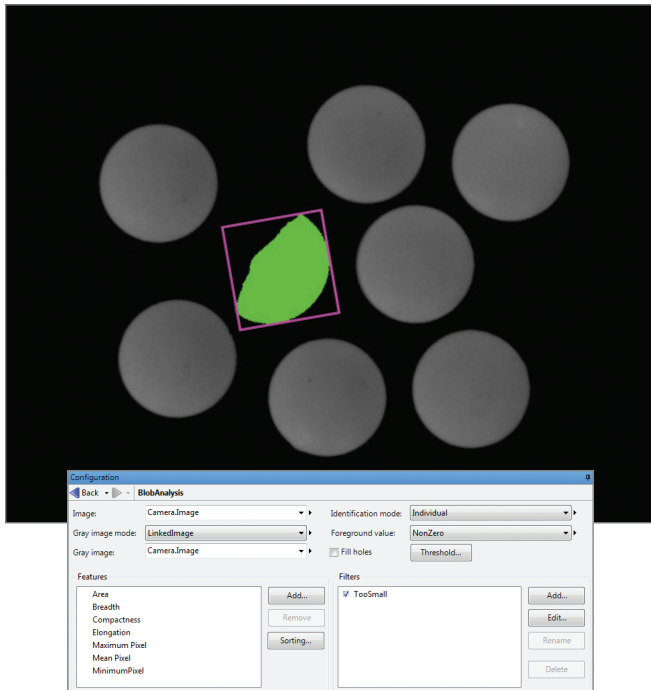


EllipseFinder step

Field-Proven Vision Tools (cont.)

Feature extraction and analysis step

The BlobAnalysis step in Matrox Design Assistant X is used to identify, count, locate, and measure basic features and objects (i.e., blobs) to determine presence and position, and enable further inspection. The step works by segmenting images where blobs are separated from the background and one another before quickly identifying the blobs. Over 50 characteristics can be measured and these measurements can be used to eliminate or keep certain blobs.



BlobAnalysis step



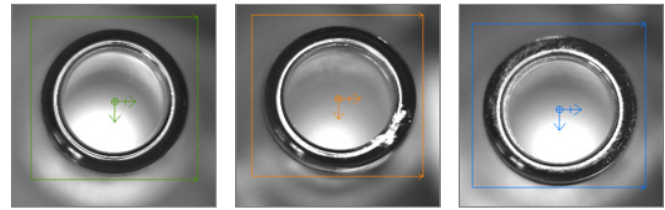
Field-Proven Vision Tools (cont.)

Classification steps

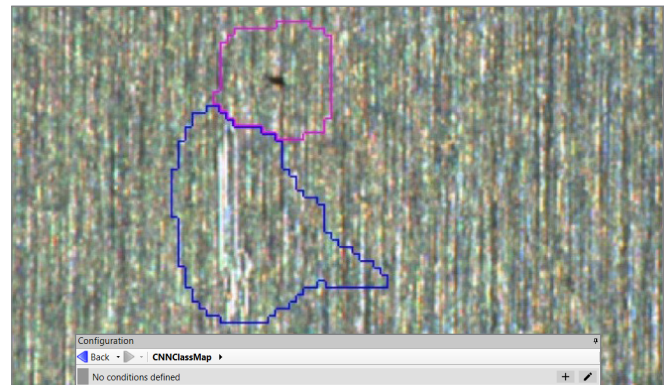
Matrox Design Assistant X includes classification steps for automatically categorizing image content using machine learning. These steps make use of deep learning—specifically convolutional neural network (CNN)—technology in two distinct approaches.

The first approach—implemented by the CNNClassIndex step—assigns images or image regions to pre-established classes. Results for each image or image region consist of the most likely class and a score for each class. The second approach—implemented by the CNNClassMap step—generates maps indicating the pre-established class and score for all image neighborhoods. These classification steps are particularly well suited for analyzing images of highly textured, naturally varying, and acceptably deformed goods.

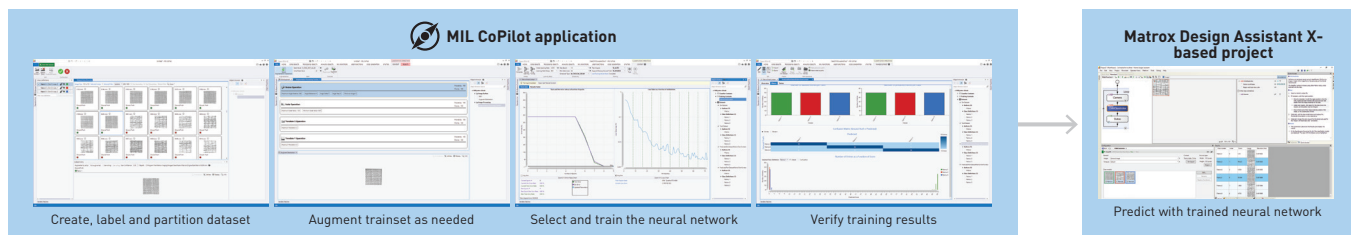
Users can train a CNN on their own—using the included [MIL CoPilot interactive environment](#)—or commission Matrox Imaging to do so using previously-collected images that are both adequate in number and representative of the expected application conditions. Different types of training, such as transfer learning and fine-tuning, are supported, all starting from one of the supplied pre-defined CNN architectures. MIL CoPilot provides what is needed to build the required training dataset, including the labeling of images and augmenting the dataset with synthesized images, as well as to monitor and analyze the training process. Training is accomplished using a NVIDIA GPU or x64-based CPU while inference is performed on a CPU in a Matrox Imaging [vision controller](#), [smart camera](#), or third-party computer, avoiding the need for specialized GPU hardware.



CNNClassIndex step



CNNClassMap step



MIL CoPilot workflow for Classification training

Field-Proven Vision Tools (cont.)

1D and 2D measurement steps

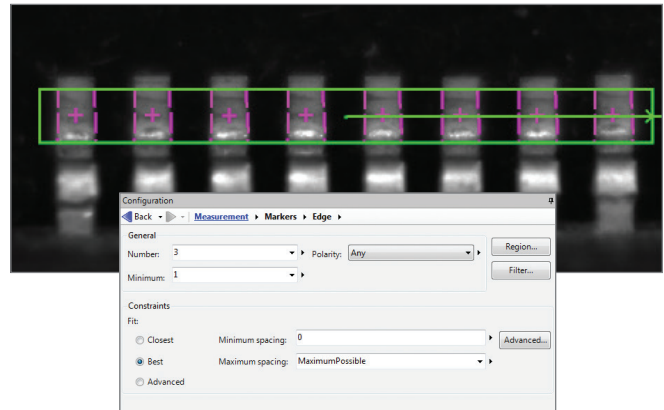
Matrox Design Assistant X includes three steps for measuring: Measurement, BeadInspection, and Metrology. These tools are predominantly used to assess manufacturing quality.

The Measurement step uses the projection of image intensity to very quickly locate and measure straight edges or stripes within a carefully defined rectangular region. The tool can make several 1D measurements on edges and stripes, as well as between edges or stripes.

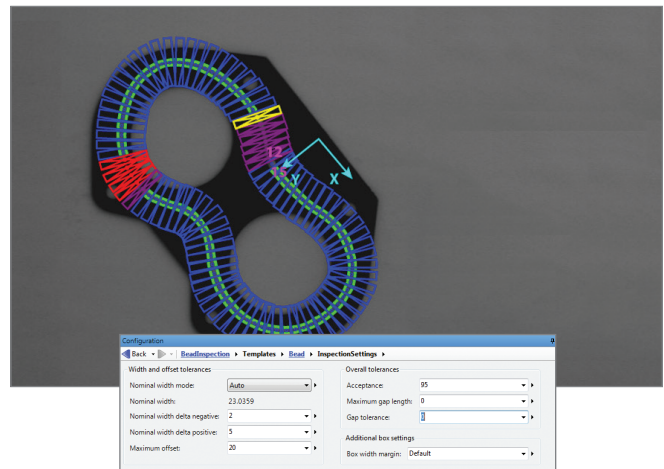
The BeadInspection step is for inspecting material that is applied as a continuous sinuous bead, such as adhesives and sealants, or its retaining channel. The step identifies discrepancies in length, placement, and width, as well as discontinuities. The BeadInspection step works by accepting a user-defined coarse path as a list of points on a reference bead and then automatically and optimally placing search boxes to form a template. The size and spacing of these search boxes can be modified to change the sampling resolution. The allowable bead width, offset, gap, and overall acceptance measure can be adjusted to meet specific inspection criteria.

The Metrology step is intended for 2D geometric dimensioning and tolerancing applications. The step extracts edges within defined regions to best fit geometric features. It also supports the construction of geometric features derived from measured ones or defined mathematically. Geometric features include arcs, circles, points, and segments. The step validates tolerances based on the dimensions, positions, and shapes of geometric features. The Metrology step can also analyze profiles obtained from 3D profile sensors or extracted from point clouds and depth maps.

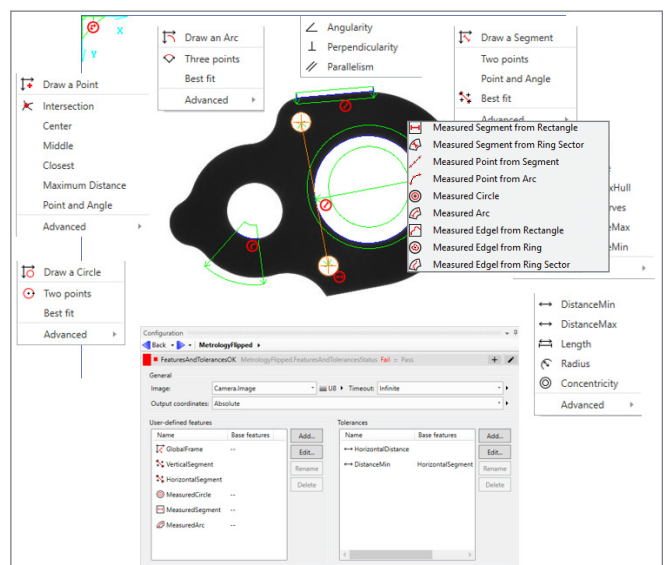
The Metrology step's effectiveness is maintained when subject to uneven changes in scene illumination, which relaxes lighting requirements. The expected measured and constructed geometric features, along with the tolerances, are kept together in a template which is easily repositioned using the results of other locating steps.



Measurement step



BeadInspection step



Metrology step

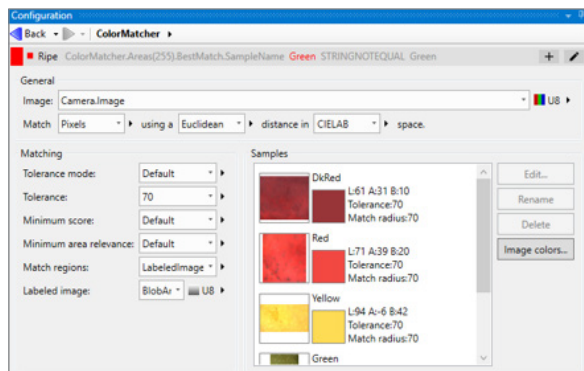
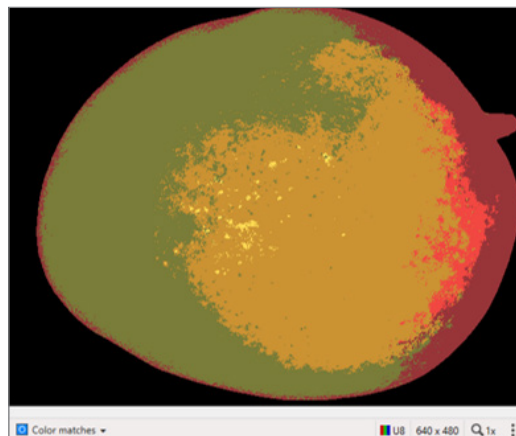
Field-Proven Vision Tools (cont.)

Color analysis steps

Matrox Design Assistant X includes a set of tools to identify parts, products, and items using color, assess quality from color, and isolate features using color.

The ColorMatcher step determines the best matching color from a collection of samples for each region of interest within an image. A color sample can be specified either interactively from an image—with the ability to mask out undesired colors—or using numerical values. A color sample can be a single color or a distribution of colors (i.e., a histogram). The color matching method and the interpretation of color differences can be manually adjusted to suit particular application requirements. The ColorMatcher step can also match each image pixel to color samples to segment the image into appropriate elements for further analysis using other steps such as [BlobAnalysis](#).

The ImageProcessing step includes operations to calculate the color distance and perform color projection. The distance operation reveals the extent of color differences within and between images, while the projection operation enhances color to grayscale image conversion for analysis using other grayscale processing steps.



ColorMatcher step

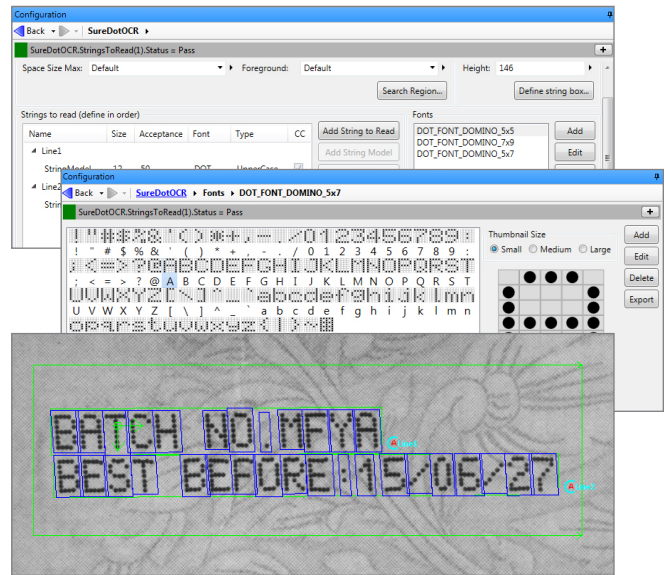
Field-Proven Vision Tools (cont.)

Character recognition steps

Matrox Design Assistant X provides two steps for character recognition: SureDotOCR and StringReader. These steps combine to read text that is engraved, etched, marked, printed, punched, or stamped on surfaces.

The SureDotOCR step is uniquely designed for the specific challenge of reading dot-matrix text produced by inkjet printers and dot peen markers. Its use is straightforward, just needing to specify the dot size, the number of characters in a text string, and the dimension—but not the location—of the text region. The step reads strings located at any angle, with varying contrast, and on an uneven background. It interprets distorted characters and handles some variability to character scale. The step recognizes punctuation marks and blank spaces. It includes pre-defined fonts that can be edited. The step automatically reads multiple lines of text where each line can be in a different font. It supports user-defined constraints, overall and at specific character positions, to further enhance recognition rates. The SureDotOCR step provides greater robustness and flexibility than case-specific techniques that convert dot-matrix characters into solid ones for reading with traditional character recognition tools.

The StringReader step is based on a sophisticated technique that uses geometric features to quickly locate and read text made up of solid characters in images where these characters are well separated from the background and from one another. It handles text strings with a known or unknown number of evenly or proportionally spaced characters. The step accommodates changes in character angle with respect to the string, aspect ratio, scale, and skew, as well as contrast reversal. It accepts strings located across multiple lines and at a slight angle. The step reads from multiple pre-defined or user-defined Latin-based fonts. It supports user-defined constraints, overall and at specific character positions, to further increase recognition rates.



SureDotOCR step



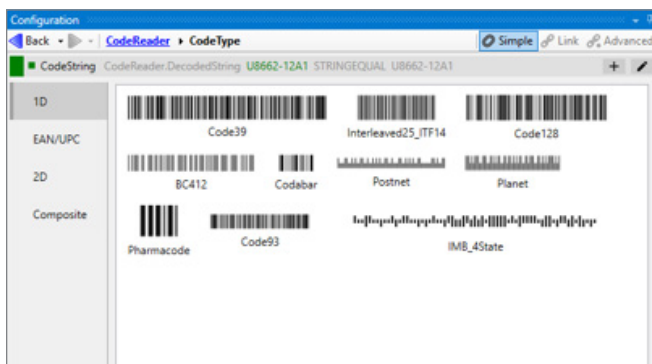
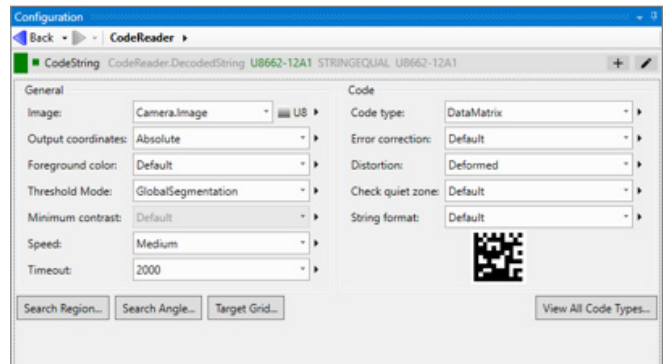
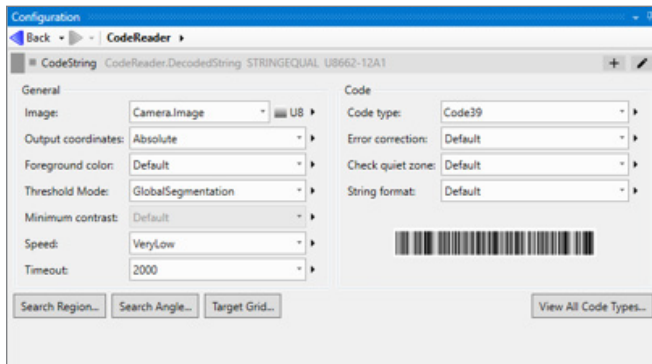
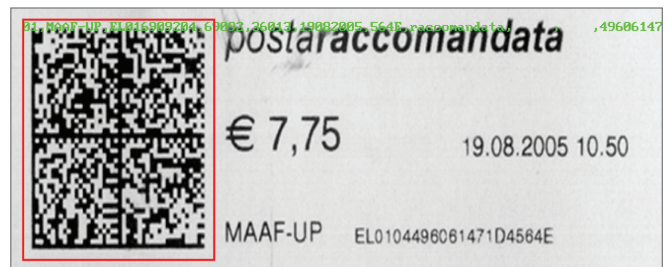
StringReader step

Field-Proven Vision Tools (cont.)

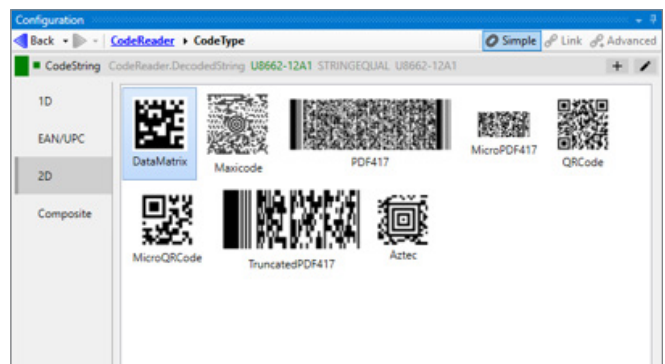
1D and 2D code reading and verification steps

The CodeReader step in Matrox Design Assistant X locates and reads 1D, 2D, and composite identification marks. The step handles rotated, scaled, and degraded codes in tough lighting conditions. The step can provide the orientation, position, and size of a code.

In addition, the CodeGrade step verifies the quality of a code based on the ANSI/AIM and ISO/IEC grading standards.



CodeReader step (1D)

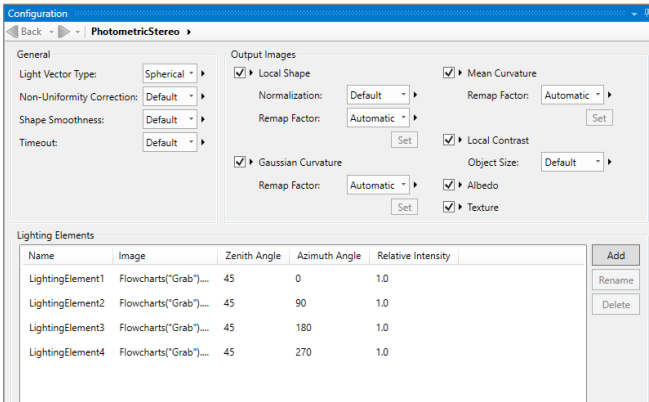


CodeReader step (2D)

Field-Proven Vision Tools (cont.)

Photometric stereo step

A PhotometricStereo step in Matrox Design Assistant X produces an image that emphasizes surface irregularities, such as embossed or engraved features, scratches, or indentations. The image is produced from a series of images of the same scene taken with directional illumination as driven by a [Quad \(X2\) Controller](#) from Advanced Illumination (Ai), a [Light Sequence Switch \(LSS\)](#) from CCS, a [LED Light Manager \(LLM\)](#) from Smart Vision Lights, or similar light controller.

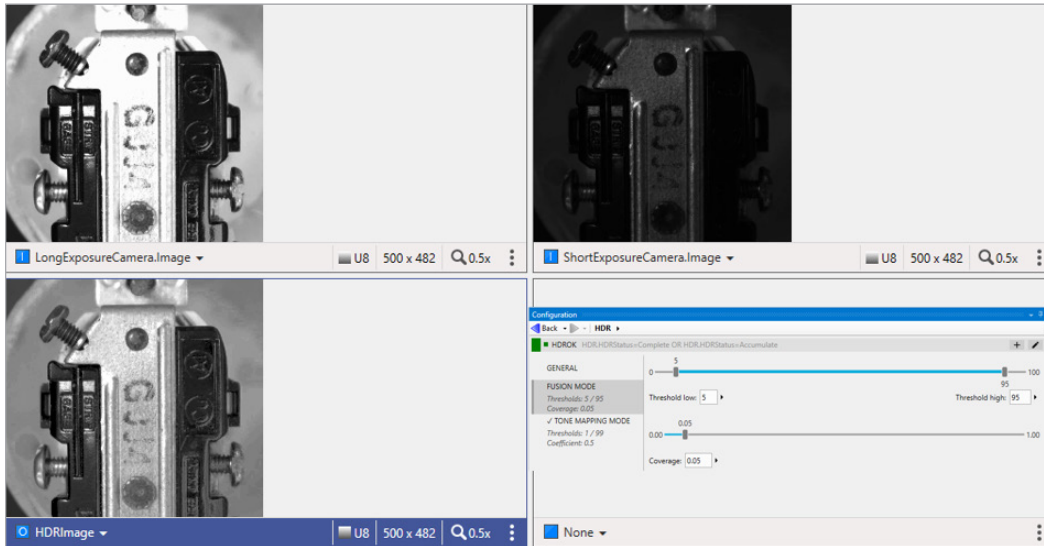


PhotometricStereo step

Field-Proven Vision Tools (cont.)

HDR step

An HDR step in Matrox Design Assistant X combines images of an identical scene, taken at different camera exposure levels, into a single image that contains a greater range of luminance (contrast).



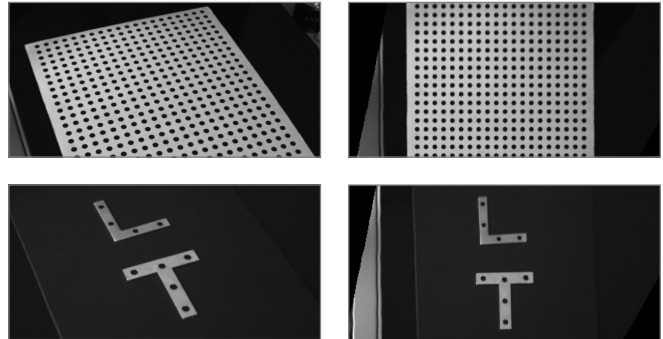
HDR step

Field-Proven Vision Tools (cont.)

2D calibration utility

Calibration is a routine requirement for machine vision. Matrox Design Assistant X includes 2D calibration capabilities to convert results (i.e., positions and measurements) from pixel to real-world units and vice-versa. The capability can compensate results and even an image itself for camera lens and perspective distortions.

Calibration is achieved using an image of a grid or just a list of known points and is performed through a utility project accessed from the Matrox Design Assistant X management portal.



A screenshot of the 'Calibration from grid' software interface. The interface has a title bar with a logo on the left and 'Continuous', 'Monoshot', and 'Trigger' buttons on the right. Below the title bar is a 'Your Company' logo. The main area is divided into several sections: 'Instructions' with two bullet points, 'Parameters' with radio buttons for 'Mode' (Linear interpolation selected, Perspective, Chessboard) and 'Grid Type' (Circle selected, Chessboard), 'Circle Grid Parameters' with radio buttons for 'Foreground' (Black dots selected, White dots), and 'Chessboard Grid Parameters' with dropdowns for 'Partial Grid' (Disabled) and 'Grid Shape' (Rectangle), and input fields for 'Grid' (Rows: 12, Columns: 17), 'Offset X' (0), 'Offset Y' (0), 'Row spacing' (1), and 'Column spacing' (1). There are 'Save calibration' and 'Terminate' buttons. A green 'Succeeded' message is displayed. On the right, there is a live video feed of the calibration board with a green 'X' and 'Y' axis overlay. Below the video feed are 'ExposureTime (ms)' controls and 'Advanced Parameters' including 'Enable grid hint for axis placement', 'Grid position hint' (Top Left), 'Custom position hint' (X: 0, Y: 0), and 'Y axis orientation' (XY CW (Down) selected, XY CCW (Up)).

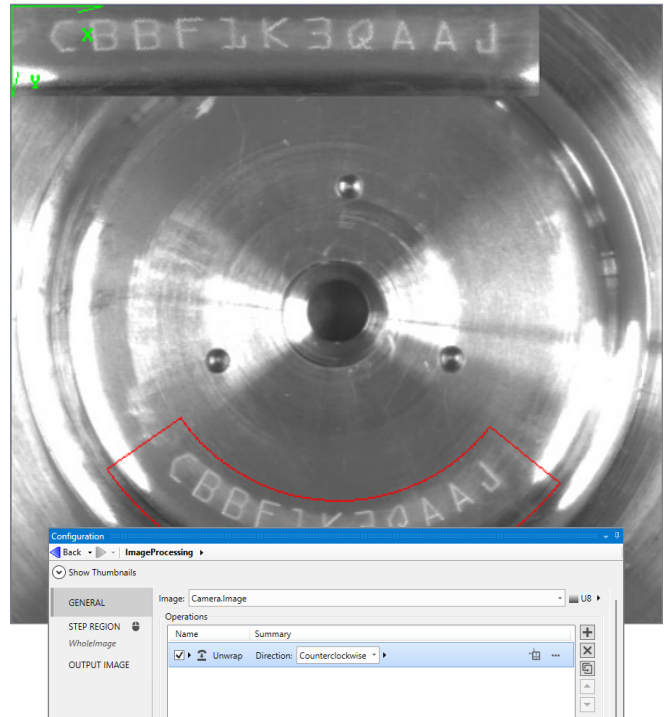
Calibration utility

Field-Proven Vision Tools (cont.)

Basic image processing steps

Matrox Design Assistant X includes the ImageProcessing step for enhancing and transforming images in preparation for subsequent analysis. Supported operations include arithmetic, color space conversions, color distance and projection (refer to [Color analysis](#) section for details), filtering, geometric transformations, logic, LUT mapping, morphology, and thresholding.

Matrox Design Assistant X also includes EdgeLocator and IntensityChecker steps. The EdgeLocator step finds objects by locating straight edges and the IntensityChecker step is used to analyze an object using image intensity.



ImageProcessing step



Field-Proven Vision Tools (cont.)

3D acquisition and display

Matrox Design Assistant X interfaces to a range of 3D cameras and sensors. These include Matrox AltiZ 3D profile sensors, as well as third-party 3D cameras and sensors through their SDK or the interface standard they support. The type of 3D data acquired includes profiles, depth maps, and point clouds. Point-cloud surfaces can be meshed and filled as required by subsequent operations.

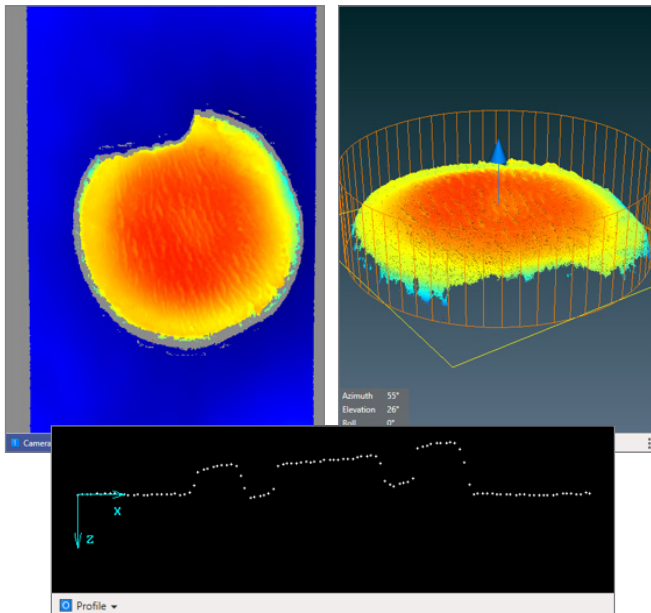


Matrox AltiZ

While profiles and depth maps are visualized as charts and greyscale or color-coded images respectively, point clouds are viewed within the IDE as is, color coded, or as a mesh with or without filling. The point-cloud view is adjustable to alter the viewpoint.

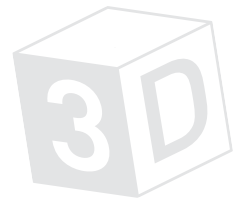
| Manufacturer | Model(s) |
|-----------------------|-------------------------------|
| Automation Technology | C5-CS series |
| Basler | blaze |
| FRAMOS | D400e series |
| Intel | D400 series |
| LMI | Gocator 2000 and 3000 series |
| Lucid | Helios(2/2+) |
| Photoneo | PhoXi series |
| SmartRay | ECCO series |
| Wenglor | weCat3D and ShapeDrive series |
| Zivid | One+ and Two |

Supported third-party 3D cameras and sensors. [Contact Matrox Imaging](#) for interfaces to other third-party 3D cameras and sensors.



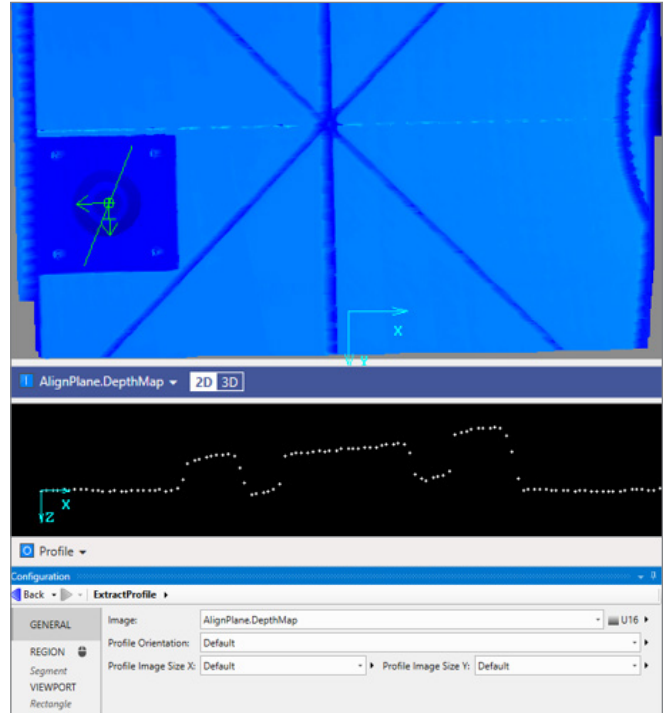
Depth map, point cloud, and profile views

Field-Proven Vision Tools (cont.)

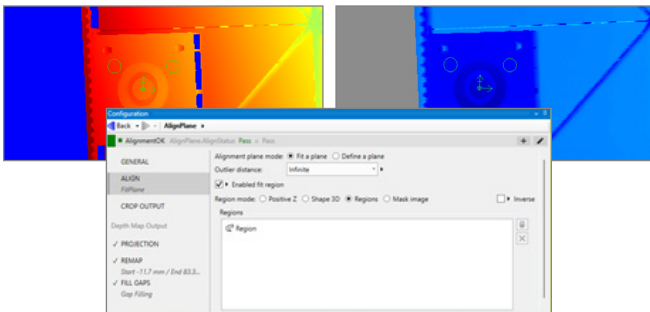


3D analysis and processing

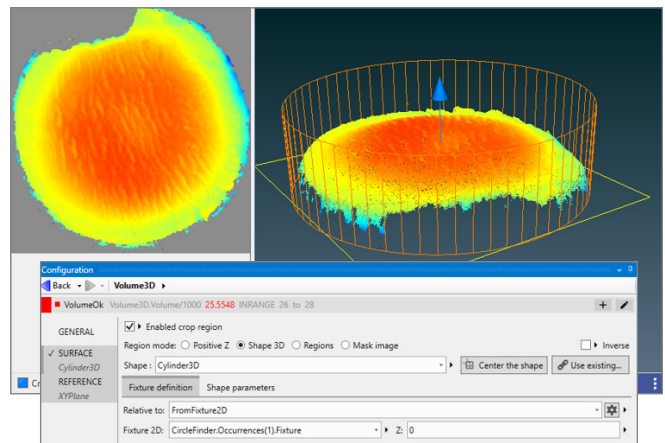
Matrox Design Assistant X is able to inspect the data produced by 3D cameras and sensors using the previously mentioned 2D or additional 3D-specific analysis and processing steps. An AlignPlane step is available to re-align the reference or resting surface in a depth map or point cloud to remove disruptive perspective prior to ensuing operations. A Project3D step (as well as an option in the Camera step) is included to obtain a suitable depth map from a point cloud for use with 2D analysis and processing steps. A FillGaps step (as well as an option in the Camera step) is provided to fill in voids and replace invalid data in a depth map. An ExtractProfile step is on hand to extract a profile from a depth map or point cloud for analysis using the Metrology step. A Volume3D step is available to compute the volume of a depth map as well as a point cloud whose surface is meshed and filled. A Crop3D step (as well as an option in the AlignPlane and Volume3D steps) is present to pull out a portion of interest from a point cloud.



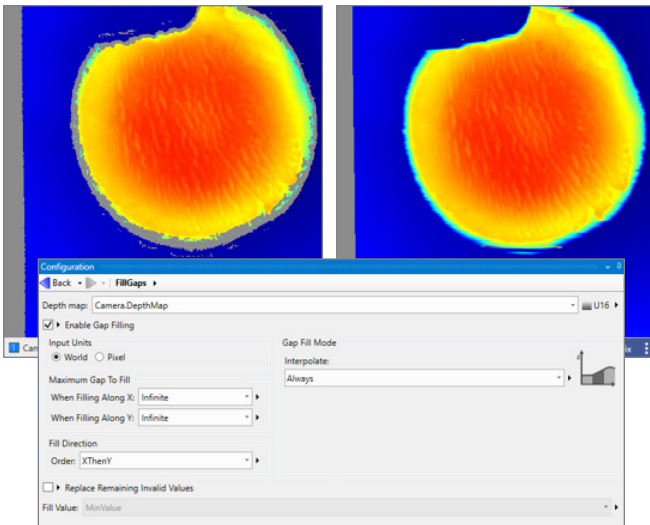
ExtractProfile step



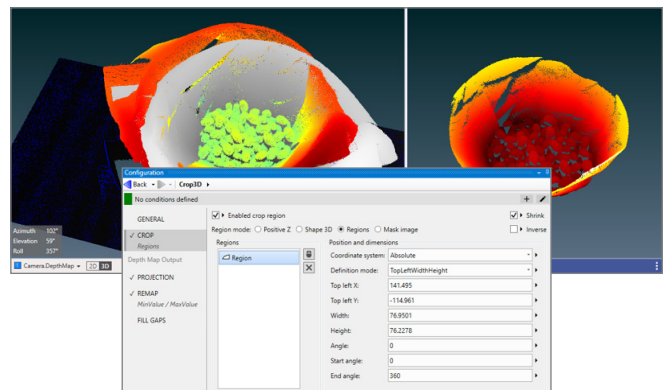
AlignPlane step



Volume3D step



FillGaps step



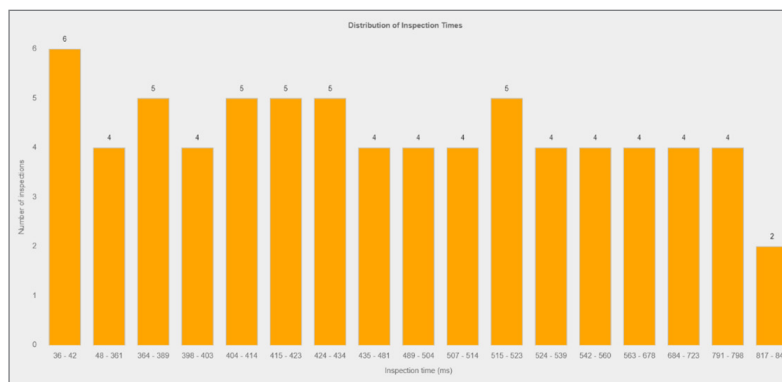
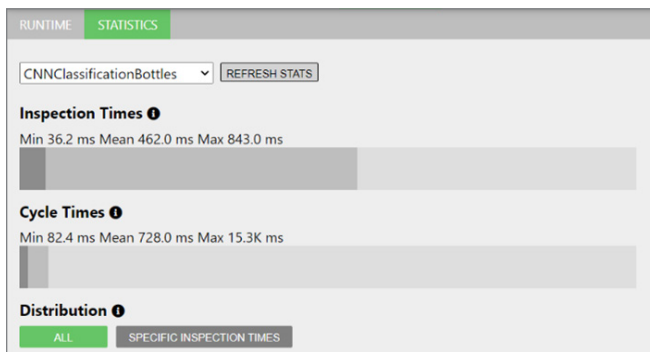
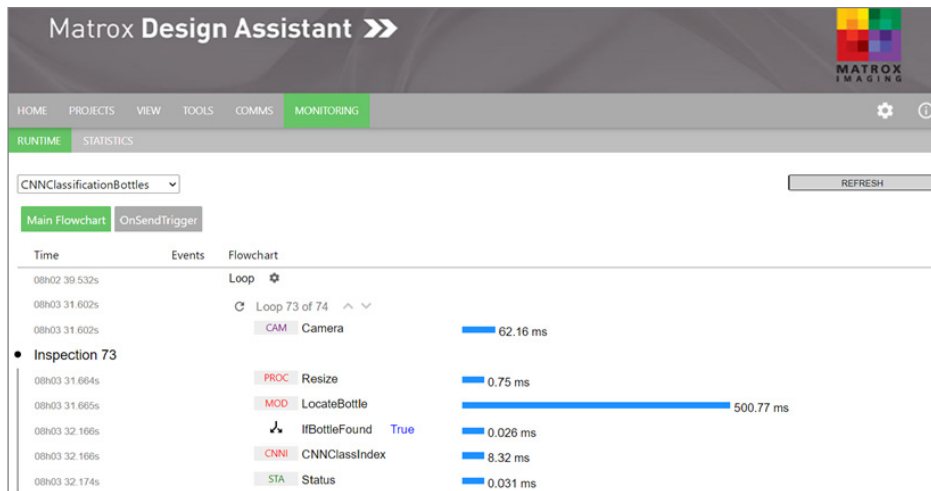
Crop3D step

Utilities

Runtime monitor

Matrox Design Assistant X's management portal includes a facility to monitor a deployed and running project and collect performance statistics to aid with troubleshooting and optimization. One of the facility's pages provides a breakdown of flowchart execution by operation for a given loop. Another page gives the minimum, mean, and maximum execution times overall and by operation as well a

distribution of the total execution times. Matrox Design Assistant X also includes Matrox Profiler, a separate utility to post-analyze the execution of a vision project for performance bottlenecks and timing issues.



Runtime monitor

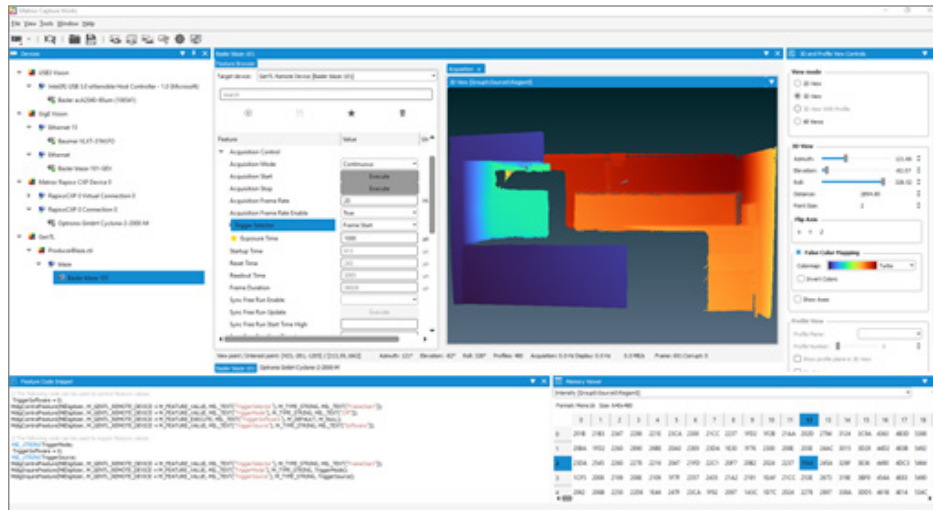
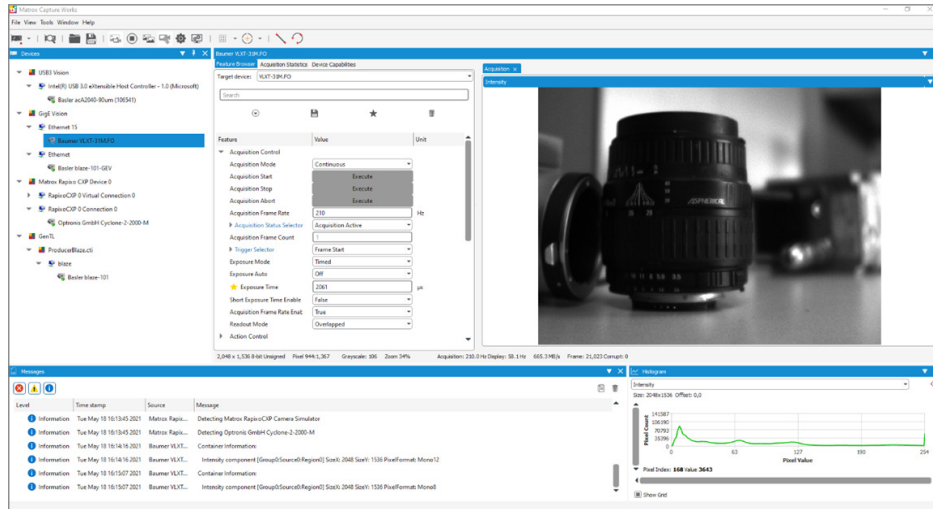
Utilities (cont.)



Matrox Capture Works

Matrox Design Assistant X comes with Matrox Capture Works, a utility for verifying the connection to one or more GenICam™-based cameras or 3D sensors and testing acquisition from these. Matrox Capture Works can obtain CoaXPress, GenTL, GigE Vision, and USB3 Vision device information, collect and present acquisition statistics, and provide access to acquisition properties. The built-in Feature Browser allows the user to configure and control devices

with ease. Device settings can be saved for future reuse. Captured data from multiple devices can be displayed efficiently in 2D and 3D where applicable, with the option to view histograms, 3D and profile data, real-time pixel profiles, memory values, and much more. Matrox Capture Works can also be used to apply firmware updates to devices provided these follow the GenICam FWUpdate standard.



Matrox Capture Works configuration and test tool for GenICam-based interface standards

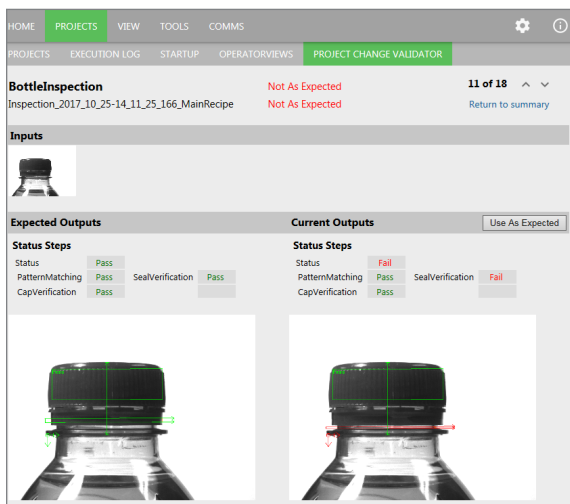
Utilities (cont.)

Project Change Validator

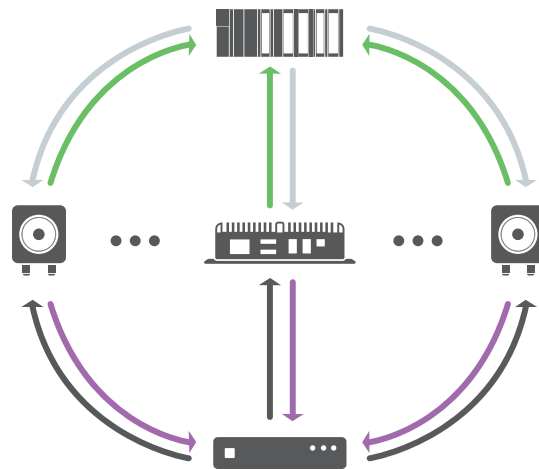
Project Change Validator is a utility employing a client-server architecture for ensuring that changes made to a deployed project are not detrimental to the functioning of that project. It provides the ability to record reference images—along with the associated inspection settings and results—for a given project.

This archived reference data is then used to validate changes made to the project. Changes are validated by running the modified project with the reference data and comparing the projects' operation against this data. Validation is performed by the server—typically running on a separate computer—which is reachable over a network.

The Matrox Design Assistant X management portal provides access to the validation data and results. Validation requests are made on demand from the management portal, an automation controller, or an HMI panel.



Project Change Validator (view from management portal)

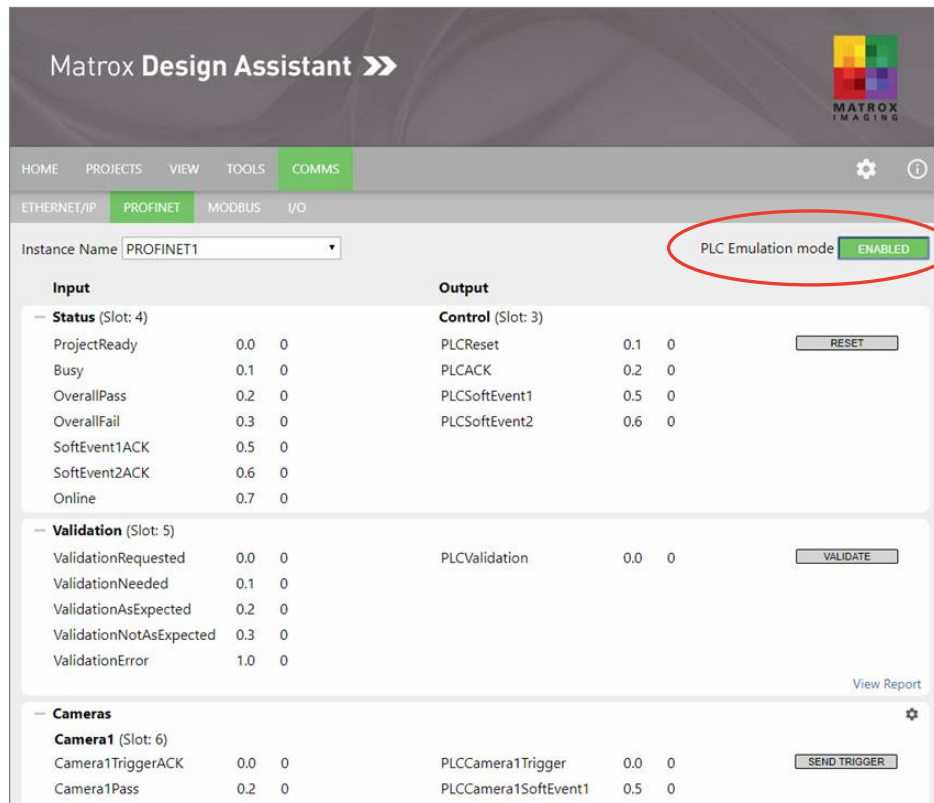


- 1 Programmable logic controller (PLC)**
sends project validation request to vision system(s)
- 2 Vision system(s)**
send(s) current project to validation server
- 3 Validation server**
verifies project and returns status to vision system(s)
- 4 Vision system(s)**
forward(s) validation status to PLC

Utilities (cont.)

PLC interface emulation

While developing a project in Matrox Design Assistant X, the PLC interface emulator is used to test communication in instances when a physical one is not connected. Values can be changed and viewed dynamically to test the communication between the project and the PLC. The PLC interface emulator supports CC-Link IE Field Basic, EtherNet/IP², MODBUS over TCP/IP, and PROFINET protocols for communication; these can be activated and controlled from the management portal.



The screenshot displays the Matrox Design Assistant X interface. The top navigation bar includes 'HOME', 'PROJECTS', 'VIEW', 'TOOLS', and 'COMMS'. Below this, there are tabs for 'ETHERNET/IP', 'PROFINET', 'MODBUS', and 'I/O'. The 'COMMS' tab is active, and the 'PROFINET' sub-tab is selected. The 'Instance Name' is set to 'PROFINET1'. A red circle highlights the 'PLC Emulation mode' which is currently 'ENABLED'. The interface is divided into three main sections: 'Input', 'Output', and 'Cameras'. Each section contains a list of variables with their respective addresses and values, along with control buttons like 'RESET', 'VALIDATE', and 'SEND TRIGGER'.

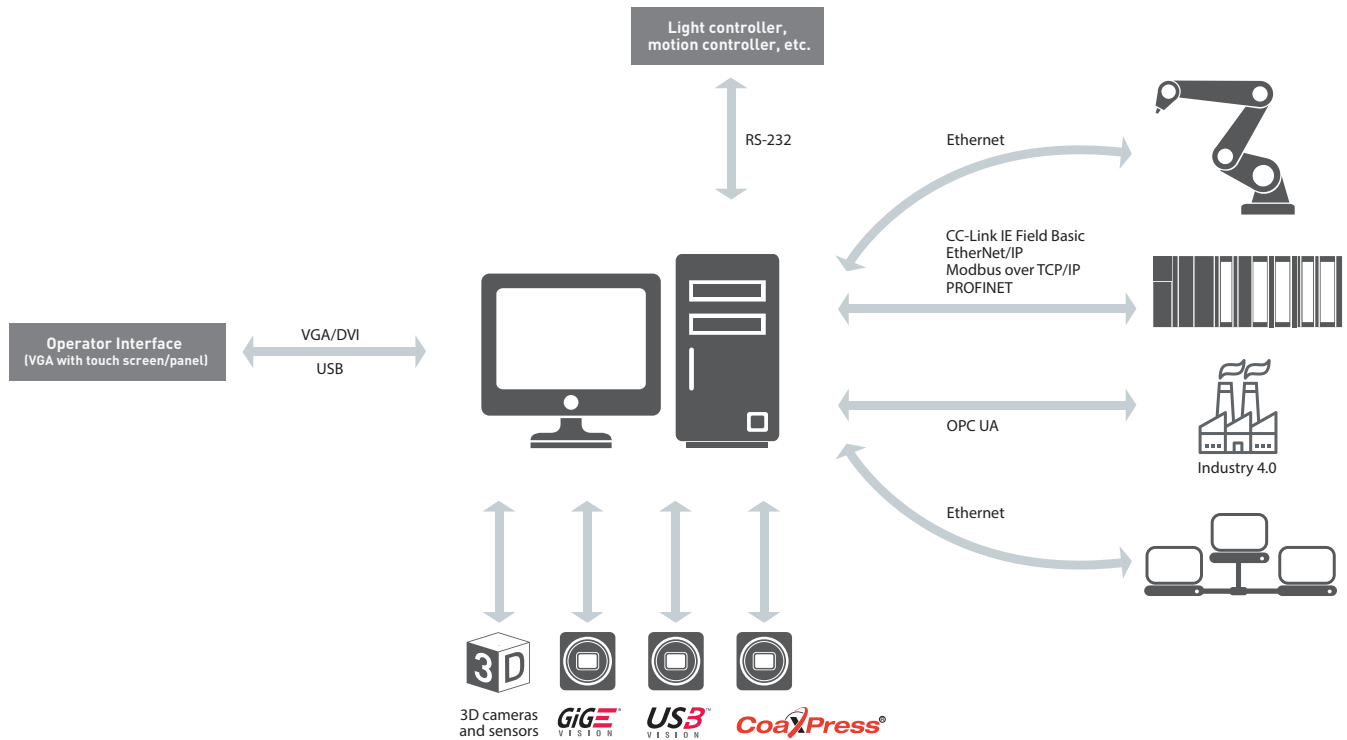
| Input | | | Output | | | |
|-----------------------------|-----|---|--------------------------|-----|---|--------------|
| Status (Slot: 4) | | | Control (Slot: 3) | | | |
| ProjectReady | 0.0 | 0 | PLCReset | 0.1 | 0 | RESET |
| Busy | 0.1 | 0 | PLCACK | 0.2 | 0 | |
| OverallPass | 0.2 | 0 | PLCSoftEvent1 | 0.5 | 0 | |
| OverallFail | 0.3 | 0 | PLCSoftEvent2 | 0.6 | 0 | |
| SoftEvent1ACK | 0.5 | 0 | | | | |
| SoftEvent2ACK | 0.6 | 0 | | | | |
| Online | 0.7 | 0 | | | | |
| Validation (Slot: 5) | | | | | | |
| ValidationRequested | 0.0 | 0 | PLCValidation | 0.0 | 0 | VALIDATE |
| ValidationNeeded | 0.1 | 0 | | | | |
| ValidationAsExpected | 0.2 | 0 | | | | |
| ValidationNotAsExpected | 0.3 | 0 | | | | |
| ValidationError | 1.0 | 0 | | | | |
| Cameras | | | | | | |
| Camera1 (Slot: 6) | | | | | | |
| Camera1TriggerACK | 0.0 | 0 | PLCCamera1Trigger | 0.0 | 0 | SEND TRIGGER |
| Camera1Pass | 0.2 | 0 | PLCCamera1SoftEvent1 | 0.5 | 0 | |

Connectivity

Connect to devices and networks

Matrox Design Assistant X can capture images from any CoaXPress, GigE Vision, or USB3 Vision compliant camera. Image capture from CoaXPress cameras happens with the use of a [Matrox Rapixo CXP](#) frame grabber. The software can communicate over Ethernet networks using the TCP/IP as well as the CC-Link IE Field Basic, EtherNet/IP², Modbus over TCP/IP, and PROFINET protocols, enabling interaction with programmable logic/automation controllers. Its QuickComm facility provides ready-to-go communication with these controllers. Matrox Design Assistant X supports OPC UA communication for interaction with manufacturing systems and direct communication with select robot controllers for 2D vision-guided robotic applications. Supported robot-controller makes and models currently include the ABB IRC5; DENSO RC8; Epson RC420+ and RC520+; Fanuc LRMate200iC and LRMate200iD; KUKA KR C2; and Stäubli CS8, CS8C HP, and CS9 controllers.

Matrox Design Assistant X can be configured to interact with automation devices through a computer's COM ports. Matrox Design Assistant X can also directly interact with the I/Os built into a Matrox Imaging [vision controller](#), [smart camera](#), and [I/O card](#) as well as the I/O available on a GigE Vision or USB3 Vision camera.



Supported Environments

For Windows

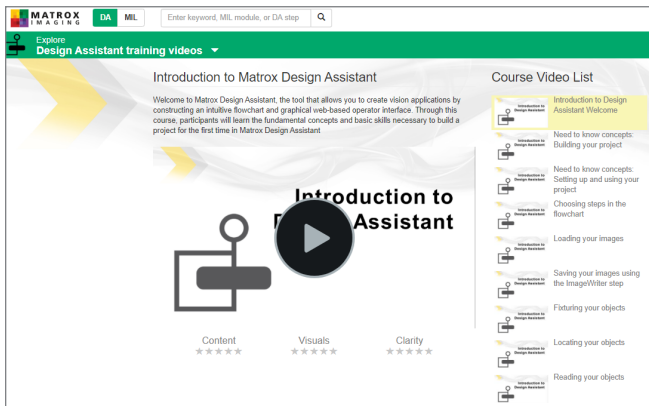
- 64-bit Windows 7 with SP1 and Windows 10 (versions 1607 to 21H1)

Training and Support

Matrox Vision Academy

Matrox Vision Academy provides all the expertise of live classroom training, with the convenience of on-demand instructional videos outlining how to get the most out of Matrox Design Assistant X vision software. Available to customers with valid Matrox Design Assistant X maintenance subscriptions, as well as those evaluating the software, users can seek out training on specific topics of interest, where and when needed. Regularly scheduled live classroom training is also offered at Matrox Imaging Headquarters.

Matrox Vision Academy aims to help users increase productivity, reduce development costs, and bring applications to market sooner. For more information, see [Matrox Vision Academy](#).



Matrox Professional Services

Matrox Professional Services delivers deep technical assistance and customized trainings to help customers develop their particular applications. These professional services comprise personalized training; assessing application or project feasibility (e.g., illumination, image acquisition, and vision algorithms); demo and prototype applications and/or projects; troubleshooting, including remote debugging; and video and camera interfacing.

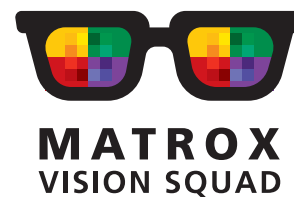
Backed by the Matrox Vision Squad—a team of high-level vision professionals—Matrox Professional Services offer more in-depth support, recommending best methods with the aim of helping customers save valuable development time and deploy solutions more quickly. For more information on pricing and scheduling, contact [Matrox Sales](#).



Matrox Design Assistant X maintenance program

Matrox Design Assistant X users have access to a Maintenance Program, renewable on a yearly basis. This maintenance program entitles registered users to free software updates and entry-level technical support from Matrox Imaging, as well as access to Matrox Vision Academy.

For more information, please refer to the [Matrox Imaging Software Maintenance Programs](#).



Ordering Information

| Part number | Description |
|--|---|
| Matrox Design Assistant X Development Package | |
| DAXWINPU | <p>Matrox Design Assistant X development package for Windows. Includes installation media with IDE and online documentation. Also includes a single-user USB hardware license key for design-time environment and all run-time packages as well as a Matrox Design Assistant X Maintenance registration number. Not required if ordering Matrox 4Sight EV6/XV6 or Matrox Iris GTX with Matrox Design Assistant X.</p> <p>Note: 75% discount for DAXWINPU if purchased with a MIL X development package (i.e., MILXWINPU) for the same user with name as proof or for a MIL X user with valid maintenance with the registration number as proof. 50% educational discount for DAXWINPU with proof of affiliation with an academic institution. Discounts cannot be combined.</p> |
| Matrox Design Assistant X Maintenance Program | |
| DAMAINTEANCE | <p>One-year extension to the Matrox Design Assistant X maintenance program per developer.</p> <p>Note: Included in the original purchase price of the Matrox Design Assistant X development package, Matrox 4Sight EV6/XV6, and Matrox Iris GTX with Matrox Design Assistant X, it entitles registered users to one year of technical support and access to updates. 75% discount for DAMAINTEANCE if purchased with MILMAINTENANCE for the same user with name as proof. 50% educational discount for DAMAINTEANCE with proof of affiliation with an academic institution. Discounts cannot be combined.</p> |
| Matrox Vision Academy Online Training | |
| <i>Included with Matrox Design Assistant X Maintenance Program</i> | <p>Matrox Vision Academy Online provides a range of categorized instructional videos on how to use the software to create applications.</p> <p>Matrox Vision Academy Online is available to customers with current Matrox Design Assistant X maintenance subscriptions, as well as those evaluating the software.</p> <p>Visit www.matrox.com/imaging/en/vision_academy/ for more information.</p> |
| Matrox Vision Academy On-Premises Training | |
| DATRRAIN <i>Ask for availability.</i> | <p><i>Introduction to Matrox Design Assistant:</i> Three-day instructor-led training on developing machine vision applications using the Matrox Design Assistant IDE.</p> <p><i>Key topics:</i> Developing a vision or inspection system using flowcharts instead of coding; setting up an operator view; choosing analysis and processing tools; interfacing to automation controllers.</p> <p>Visit www.matrox.com/imaging/en/vision_academy/on_premises/ for more information.</p> |
| Matrox Design Assistant X Run-time License Software Keys | |
| DXRTxxxxxxx00 | <p>Matrox Design Assistant X runtime software license key. The user must supply a lock code generated using the license management utility (MILConfig's Licensing tab) or the smart camera portal (Licensing tab on the Settings page). This unique lock code identifies the target system and package(s) to license. The correspondence between the below packages and flowchart steps comes from the Project License Information dialog accessible from the Platform menu in Matrox Design Assistant X.</p> <p>Note: Combine packages by substituting 0 at the appropriate position x with the appropriate letter or other digit.</p> |
| DXRTA000000000 | Matrox Design Assistant X Image Analysis package. Enables BeadInspection, BlobAnalysis, Camera (with calibration), CameraFocus, EdgeLocator, Measurement, ImageCorrection, IntensityChecker, ImageProcessing (also see DAXRT...Q...), LoadImage (with calibration), Remap, and Mask steps. Also required for AlignPlane, Crop3D, ExtractProfile, and Volume3D steps. |
| DXRTM000000000 | Matrox Design Assistant X Machine Vision package. Includes ImageAnalysis package and enables PatternMatching step. |
| DXRT0I000000000 | Matrox Design Assistant X Identification package. Enables CodeReader and CodeGrade steps. |
| DXRT0C000000000 | Matrox Design Assistant X StringReader and SureDotOCR package (steps). |
| DXRT02000000000 | Both DXRT0I000000000 and DXRT0C000000000. |
| DXRT00J00000000 | Matrox Design Assistant X Image Compression package. Required for Camera, ImageWriter, and LoadImage steps with image (de)compression. |

Ordering Information (cont.)

| Part number | Description |
|---|---|
| DXRT000G000000 | Matrox Design Assistant X Geometric Model Finder package. Enables ModelFinder, RectangleFinder, CircleFinder, EllipseFinder, and SegmentFinder steps. |
| DXRT0000S00000 | Matrox Design Assistant X Interface package. Enables image acquisition using GenTL, GigE Vision, and USB3 Vision. Note: Not required for Matrox 4Sight GPrm/EV6/XV6 and Matrox Iris GTR/GTX bundled with Matrox Design Assistant X. Also see DXRT0000030000. |
| DXRT0000R0000 | Matrox Design Assistant X Registration package. Enables PhotometricStereo and HDR steps. |
| DXRT0000030000 | Matrox Design Assistant X 3D Calibration and Supplemental package. Enables 3D camera and sensor acquisition as well as AlignPlane (also see DXRTA.../DXRTM... and DAXRT...Y...), Crop3D (also see DXRTA.../DXRTM...), ExtractProfile (also see DXRTA.../DXRTM...), FillGaps, Project3D, and Volume3D (also see DXRTA.../DXRTM... and DAXRT...Y...) steps. |
| DXRT0000020000 | Both DXRT00000R0000 and DXRT0000030000. |
| DXRT000000Y000 | Matrox Design Assistant X Metrology package (step). Also required for AlignPlane and Volume3D steps. |
| DXRT000000Q000 | Matrox Design Assistant X Color Analysis package. Enables ColorMatcher step. Also required for the ImageProcessing step's color distance/projection operation. |
| DXRT000000B000 | Both DXRT000000Y000 and DXRT000000Q000. |
| DXRT000000Z000 | Matrox Design Assistant X Industrial and Robot Communications functionality. Note: Not required for Matrox 4Sight GPrm/EV6/XV6 and Matrox Iris GTR/GTX bundled with Matrox Design Assistant X. |
| DXRT000000N000 | Matrox Design Assistant X Classification package. Enables CNNClassIndex and CNNClassMap steps. |
| DXRT0000000200 | Both DXRT0000000Z000 and DXRT0000000N000. |
| DXRTM2B2B2B200 | All Matrox Design Assistant packages. Enables all Matrox Design Assistant X steps. |
| Software License Hardware ID Key | |
| MILRTIDCMC | Software license USB hardware fingerprint and storage. Note: Replaces Matrox Imaging hardware as the fingerprint used to generate the unique system code. DXRT...00 is still required. |
| Matrox Design Assistant X Runtime License Hardware Key | |
| DXRTxxxxxxx00U | Pre-programmed Matrox Design Assistant X runtime USB hardware license key that enables appropriate package(s). Note: See Matrox Design Assistant X Runtime License Software Keys section for available selections. Alternative to DXRT...00. |

Endnotes:

1. The software may be protected by one or more patents; see www.matrox.com/patents for more information.
2. Certification pending.

The Matrox Imaging advantage



Assured quality & longevity

Adhering to industry best practices in all hardware manufacturing and software development, product designs pay careful attention to component selection to secure consistent long-term availability. Matrox Imaging is able to meet Copy Exact and Revision Change Control procurement requirements in particular circumstances, backed by a dedicated team of QA specialists.



Trusted industry standards

Matrox Imaging champions industry standards in its design and production. Leveraging these standards to deliver quality compatible products, Matrox Imaging protects its customers' best interests by ensuring hardware and software components work with as many third-party products as possible.



Comprehensive customer support

Devoted front-line support and applications teams are on call to offer timely product installation, usage, and integration assistance. Matrox Professional Services delivers deep technical assistance to help customers develop their particular applications in a timely fashion. Services include personalized training and device interfacing as well as application feasibility, prototyping, troubleshooting, and debugging.



Tailored customer training

Matrox Vision Academy comprises online and on-premises training for Matrox Imaging vision software tools. On-premises intensive training courses are regularly held at Matrox headquarters, and can also be customized for onsite delivery. The Matrox Vision Academy online training platform hosts a comprehensive set of on-demand videos available when and where needed.



Long-standing global network

Matrox Imaging customers benefit from a global network of distributors who offer complementary products and support, and integrators who build customized vision systems. These relationships are built on years of mutual trust and span the globe, ensuring customer access to only the best assistance in the industry.



About Matrox Imaging

Founded in 1976, Matrox is a privately held company based in Montreal, Canada. Imaging and Video divisions provide leading component-level solutions, leveraging the others' expertise and industry relations to provide innovative, timely products.

Matrox Imaging is an established and trusted supplier to top OEMs and integrators involved in machine vision, image analysis, and medical imaging industries. The components consist of smart cameras, 3D sensors, vision controllers, I/O cards, and frame grabbers, all designed to provide optimum price-performance within a common software environment.

Contact Matrox Imaging

imaging.info@matrox.com

1 800 804 6243 (in North America) or +1 514 822 6020

www.matrox.com/imaging

The use of the terms "industrial" or "factory-floor" do not indicate compliance to any specific industrial standards.

matrox[®]

© 2021 Matrox Electronic Systems Ltd. All rights reserved. Matrox reserves the right to change specifications without notice. Matrox and Matrox product names are either trademarks and/or registered trademarks in Canada or other countries and/or trademarks of Matrox Electronic Systems Ltd and/or Matrox Graphics Inc. All other company and product names are registered trademarks and/or trademarks of their respective owners. The information furnished herein is believed to be accurate and reliable at time of printing; however, no responsibility license is granted under any patents or patent rights of Matrox Electronic Systems Ltd. 11/2021