

**Lelmac**  
● CHALLENGE & HIGH QUALITY

# illumination for Vision



# Index

Line illumination with natural air cooling that achieves the highest level of light in the industry!	3
<b>IDBC-LSR Series</b>	3
High-performance multi-position ring illumination covering long to short-range irradiation	3
<b>IMAR-D,IMAR-CT Series</b>	3
Ideal for large objects and long-distance irradiation! B'C line lighting.	4
<b>IDBA-LEH Series</b>	4
Lightweight, thin 8mm, space-saving, high brightness, highly uniform thin dome lighting	4
<b>IFHA Series</b>	4
Surface lighting equipped with high brightness CHIP LED.	5
<b>IHMA Series</b>	5
Perforated surface illumination equipped with highly uniform LED.	5
<b>IFPA-D,IHMA-D Series</b>	5
Quasi-coaxial epi-illumination with narrow angle distribution with high illuminance, high uniformity, and compact housing.	6
<b>IFVA Series</b>	6
Achieves industry-leading ultra-high brightness. High-performance spot lighting.	6
<b>IHVT Series</b>	6
Ideal for long-distance irradiation! LED parallel light spot lighting	7
<b>IBF Series</b>	7
No PLC or programming required. Built-in lighting controller compatible with GenICam.	7
<b>IDMU Series</b>	7
A lineup of IP67 compatible lighting effective for food inspection, etc.!	8
<b>Water Proof Series</b>	8
Multi-wavelength illumination with RGB or 7 color wavelengths implemented	8
<b>Multi-color Series</b>	8
High-power ultraviolet lighting equipped with high-intensity LEDs. Ideal for fluorescence observation applications	9
<b>UV Series</b>	9
Achieves industry-leading ultra-high brightness. Lineup of optimal wavelengths for each application!	9
<b>IR Series</b>	9
Divided lighting compatible with various shapes and sizes. Perfect for Computational Imaging.	10
<b>Segmented Ring Illumination Series</b>	10
Ideal for mounting on robot arms! Lighting/camera control is possible with a single POE cable.	10
<b>RobotLight Series</b>	10
Realizing high-speed 3D inspection with LED stripe projection light source!	10
<b>3D PHASE-SHIFT ILLUMINATOR Series</b>	10

Line illumination with natural air cooling that achieves the highest level of intensity in the industry!

# IDBC-LSR Series



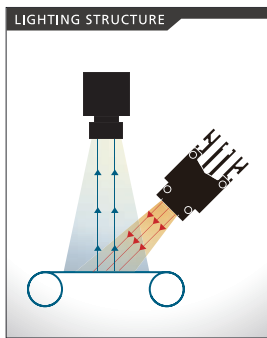
**[specification]**  
 Standard Size: 100 ~ 3000mm  
 Wavelength: R / B / W / IR(860)

**Feature:**

- Achieved 1.2 million lux with natural air cooling method!
- Two types are available: high brightness and high uniformity.
- Ideal for clean room usages thanks to natural air cooling.
- Flexible lighting effects can be achieved using the optional condenser lens/coaxial half-mirror box.

**Application:**

- Film inspection, LCD inspection, battery inspection



High-performance multi-position ring illumination covering long to short-range irradiation

# IMAR-D, IMAR-CT Series



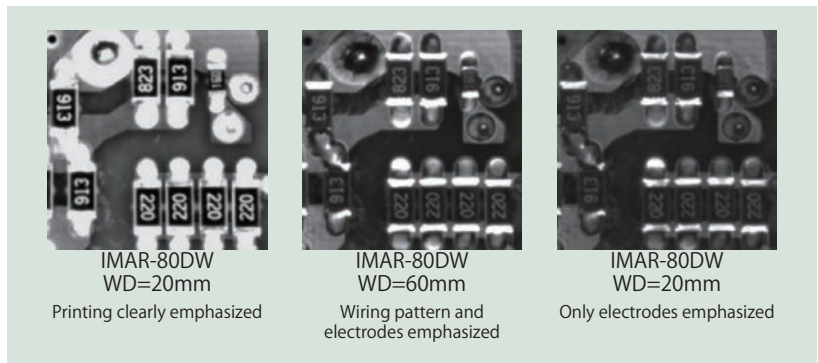
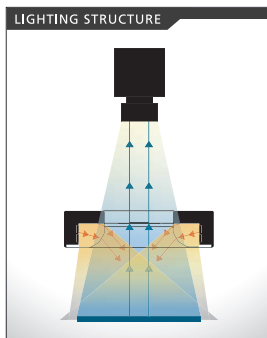
**[specification]**  
 Standard Size:  $\varnothing$  55mm ~  $\varnothing$  250mm  
 Wavelength: R / B / W / IR(850,940)

**Feature:**

- Thanks to the special optical design, it can be placed in various positions to provide high-angle to low-angle irradiation.
- Equipped with the latest high-brightness, high-uniform CHIP LED to reduce halation on the inspection object.
- The half-split type is ideal for lateral visual inspection of cylindrical parts and string-like objects.

**Application:**

- Film inspection, LCD inspection, battery inspection

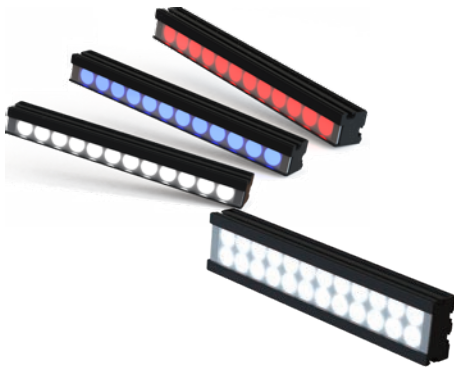


IMAR-80DW  
 WD=20mm  
 Printing clearly emphasized

IMAR-80DW  
 WD=60mm  
 Wiring pattern and electrodes emphasized

IMAR-80DW  
 WD=20mm  
 Only electrodes emphasized

## Ideal for large objects and long-distance irradiation! B'C line lighting IDBA-LEH Series



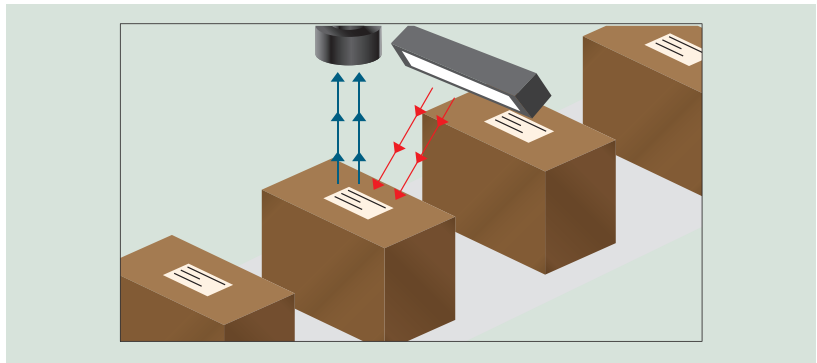
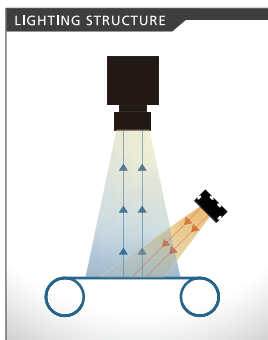
**[specification]**  
Standard Size: 75mm~1800mm  
Wavelength: R / B / W / G / IR(850)

**Feature:**

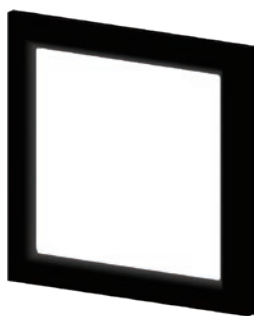
- The lineup includes a narrow-angle type ideal for long-distance irradiation, and a wide-angle type ideal for uniform irradiation.
- Using high power LEDs, it can irradiate at distances of over 1M.
- Product lineup includes 1-row and 2-row types to suit the irradiation range.
- Lineup includes long sizes of 1m or longer.

**Application:**

- Robot picking, cardboard OCR



## Lightweight and space-saving dome illumination with high brightness and highly uniformity. IFHA Series



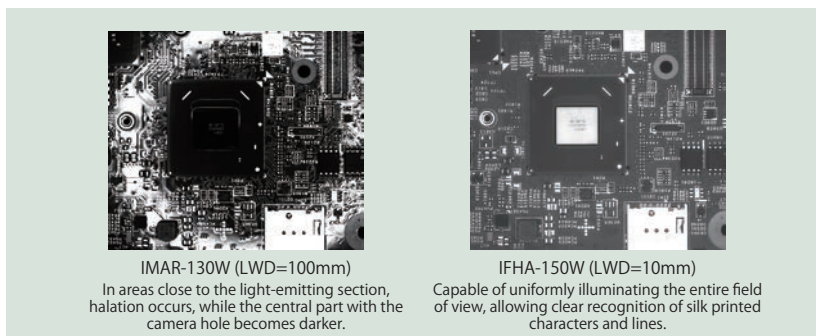
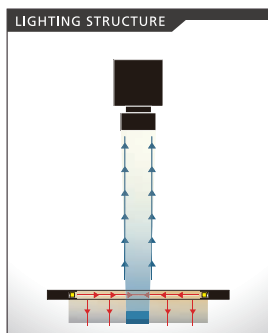
**[specification]**  
Standard Size: □ 25mm~400 × 300mm  
Wavelength: R / B / W / G / IR(850)

**Feature:**

- Leimac's special optical design provides clear Dome lighting that achieves high uniformity and high output. Highly uniform irradiation makes it ideal for OCR and visual inspection of glossy objects.
- To protect the light emitting surface, a cover acrylic coated with a hard coat equivalent to 4H can be installed.

**Application:**

- Metal parts inspection, OCR of shiny parts and packages

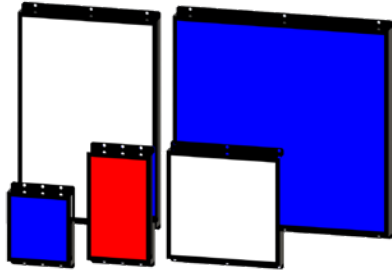


IMAR-130W (LWD=100mm)  
In areas close to the light-emitting section, halation occurs, while the central part with the camera hole becomes darker.

IFHA-150W (LWD=10mm)  
Capable of uniformly illuminating the entire field of view, allowing clear recognition of silk printed characters and lines.

# Flat illumination equipped with high brightness CHIP LED

## IHMA Series



### [specification]

#### Standard Size:

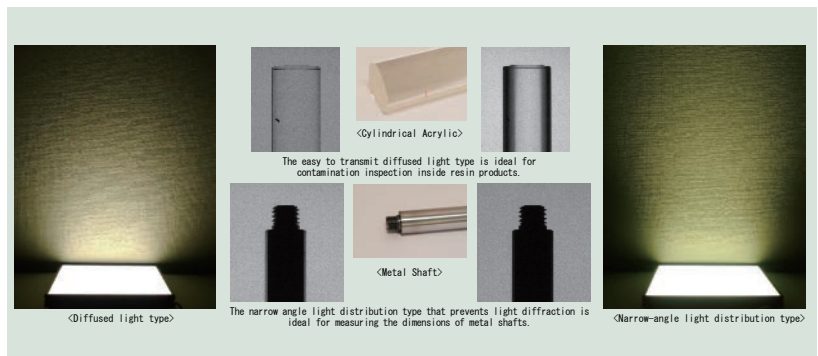
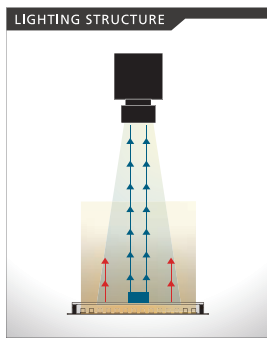
- Min25 × 30 ~ Max214 × 226mm (Square)
  - Min30 × 66 ~ Max214 × 142mm (Rectangle)
- Wavelength: R / B / W

#### Feature:

- Equipped with the latest chip LED, the entire light emitting surface is highly luminous. Achieves high uniformity.
- Two models are available: a narrow-angle light distribution model ideal for edge enhancement. And a diffused light model for transmission inspection.

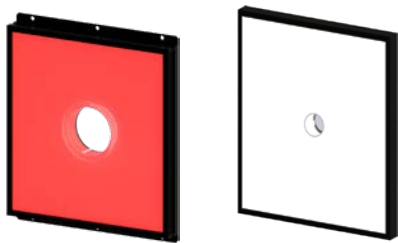
#### Application:

- Dimension measurement, foreign object inspection



# Holed flat illumination equipped with highly uniform LED. Capable of irradiating narrow to wide fields of view.

## IFPA-D, IHMA-D Series



### [specification]

#### Standard Size:

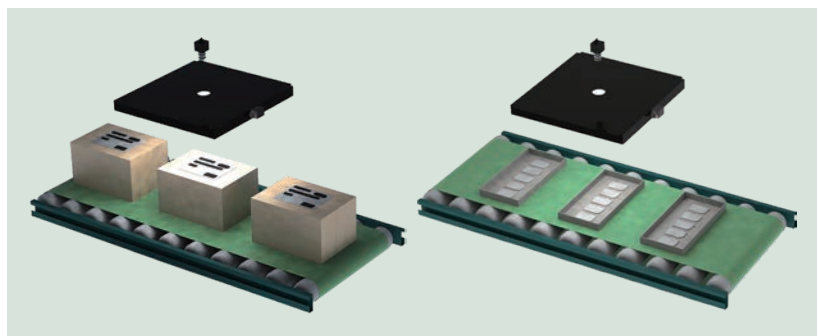
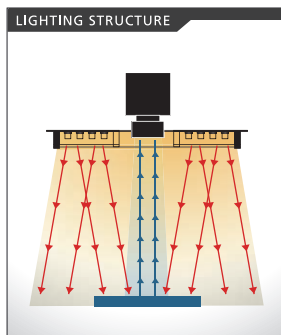
- 100mm ~ φ 200mm(IHMA-D)
  - 100mm ~ φ 500mm(IFPA-D)
- Wavelength: R / B / W

#### Feature:

- Equipped with highly uniform chip LEDs uniformly illuminating the entire object, allowing halation reduction.
- The lineup includes two types: a thin high-output type (IHMA-D) and a wide type IFPA-D."

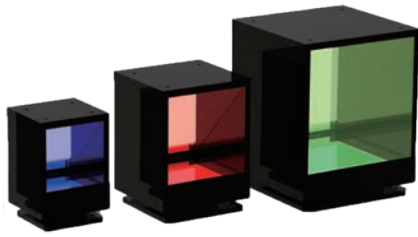
#### Application:

- Robot picking, OCR



Pseudo-Coaxial-illumination with narrow angle distribution with high illuminance, high uniformity, and compact housing.

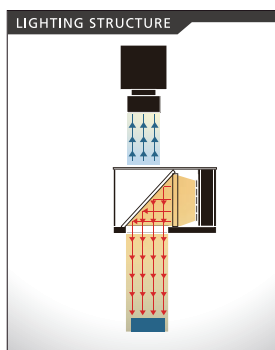
# IFVA Series



**[specification]**  
Standard Size: □ 20mm~Max □ 200mm  
Wavelength: R / B / W / G/IR(850)

**Feature:**  
High illumination, high uniformity, compact housing. The 20mm size is ideal for visual inspection at high magnification thanks to its special optical system.

**Application:**  
•Metal parts inspection, board inspection, alignment



Imaging example



Achieves industry-leading ultra-high brightness. High-performance spot lighting.

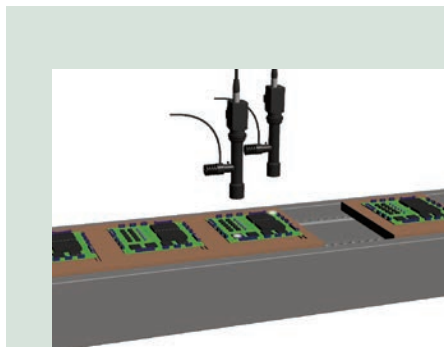
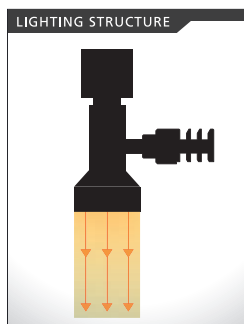
# IHVT Series



**[specification]**  
Wavelength: R / B / W / G/IR/UV

**Feature:**  
The unique housing design improves heat dissipation and achieves the industry's highest level of illumination. Rich color lineup

**Application:**  
•Alignment of electronic components, Liquid crystal and semiconductor



Lighting used: IHVE-21AW

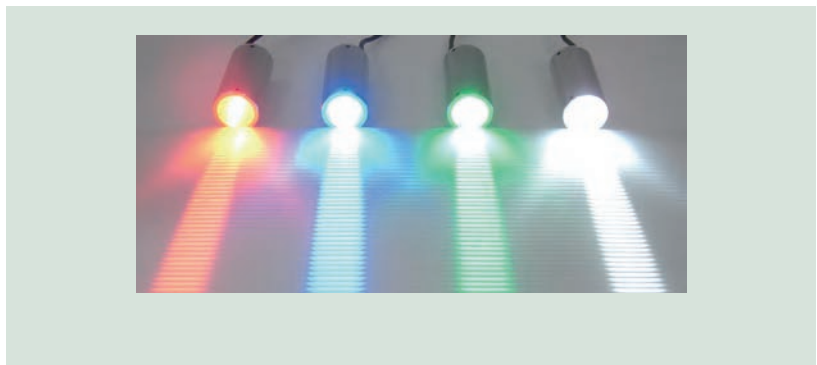
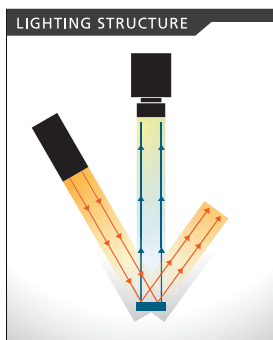
# Ideal for long-distance irradiation! LED collimated light spot lighting IBF Series



**[specification]**  
 Standard Size:  $\varnothing$  20, 30, 40, 60mm,  $\square$  100mm  
 Wavelength: UV (405)/ B/G/AMB/R/IR

**Feature:**  
 • The highly parallel light rays make it perfect for enhancing subtle silhouettes.  
 • It is possible to capture silhouettes of cylinders, metals, and fine workpieces without light wrapping around them.

**Application:**  
 Fine scratches inspection and edges Emphasis

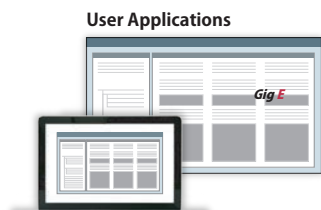


Build-in type GigE Vision compatible illumination controller easy to program due to GenCam standard compliance.

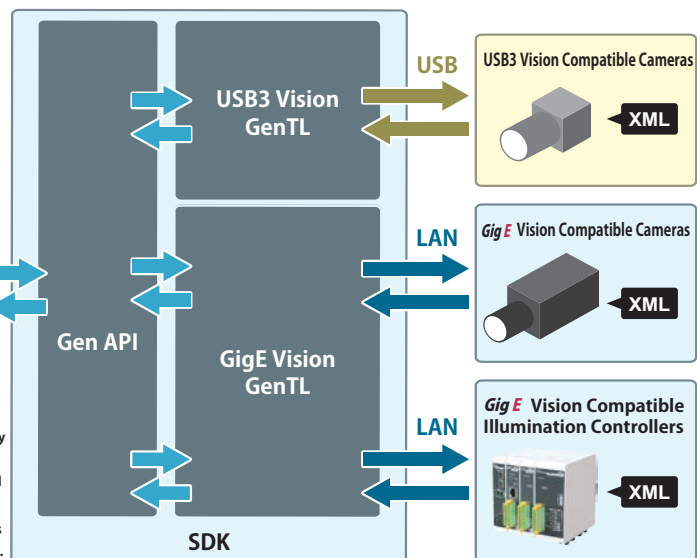
# IDMU Series



**[specification]**  
 • Easy configuration via GenCam parameters.  
 • Precise camera and light synchronization.  
 • No IP setting needed.  
 • Flexible hardware configuration.  
 Expandable to 40 channels



By using SDKs provided by image processing library manufacturers, devices that support Vision, USB3 Vision, and other standards can be controlled independently of the manufacturer.  
 In addition, it becomes possible to control the devices without worrying about the communication interface.



A lineup of IP67 compatible lighting effective for food inspection, etc.!

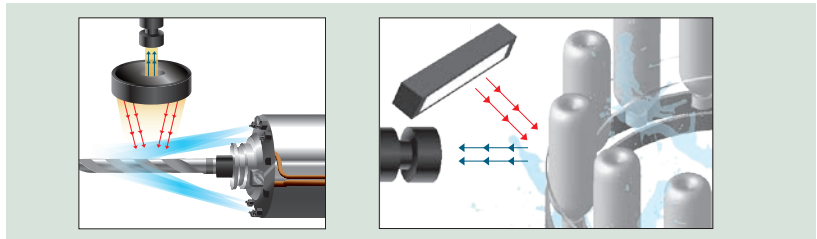
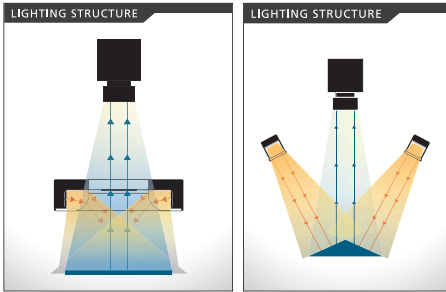
# Water Proof Series



**[specification]**  
 Standard Size:  $\varnothing$  90,140mm (Ring)  
 Min100mm~Max 800mm(Bar)  
 Wavelength : B/W/R/

**Feature:**  
 •Being IP67 compliant, it can also be used for visual inspection during cleaning processes, etc.  
 •A lineup of ring illumination in two sizes with an outer diameter of  $\Phi$  90mm/140mm and bar illumination at the maximum of 800mm readily available. Despite its compact dimension, the bar illumination achieves a wide-angle arrangement owing to a special optical design. Suitable for a wide imaging range requirements as well.

**Application:**  
 •Food, Machine tools Inspection  
 •OCR for Food Package  
 •Observation of bubbles in liquid



Multi-wavelength illumination with RGB or 7 color wavelengths implemented

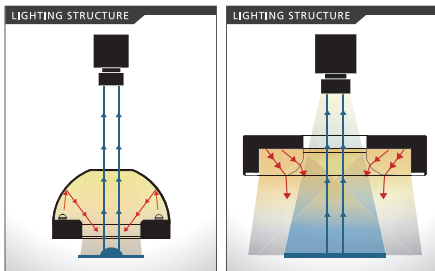
# Multi-color Series



**[specification]**  
 Standard Size : Min100mm~Max 3,000mm  
 Wavelength :  
 UV (405)/ B/G/AMB/R/FIR(740)/NIR(850)

**Feature:**  
 Multi-spectral illumination equipped with high brightness, high uniformity LEDs. Ideal for multispectral imaging due to wavelength switching imaging.

**Application:**  
 •Material sort, recycling, color inspection



Relation between lighting color and object color

(Object Color)	(Red light irradiation (R))	(Green light irradiation (G))	(Blue light irradiation (B))	(Relation between reflection and absorption of light)
<b>cyan</b>				White (R+G+B) - Red (R) = Cyan (G+B)
<b>magenta</b>				White (R+G+B) - Green (G) = Magenta (R+B)
<b>yellow</b>				White (R+G+B) - Blue (B) = Yellow (R+G)



High-power ultraviolet lighting equipped with high-intensity LEDs. Ideal for fluorescence observation applications

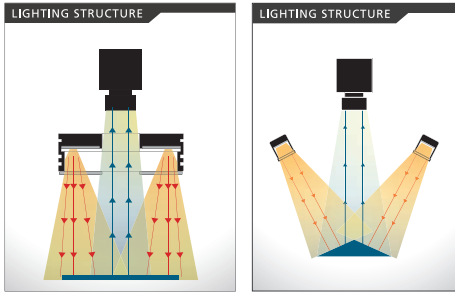
# UV Series



**[specification]**  
 Ring  
 Standard Size:  
 $\varnothing$  65,100mm (Ring)  
 Min75mm~Max 600mm(Bar)  
 Wavelength : UV365,375,385,395,405,

**Feature:**  
 Equipped with the latest ultraviolet LED. Achieves high output. Two models: long-distance irradiation (L type) and uniform irradiation (S type). UV compatible diffuser plate/transparent to protect inside of illumination readily available.

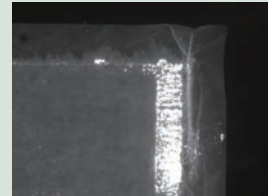
**Application:**  
 • Fluorescence observation  
 • Fine scratch inspection  
 • Dust inspection



Sample: Adhesion of glues



White



IDHRA-100L-UV-365

Achieves industry-leading ultra-high brightness. Lineup of optimal wavelengths for each application!

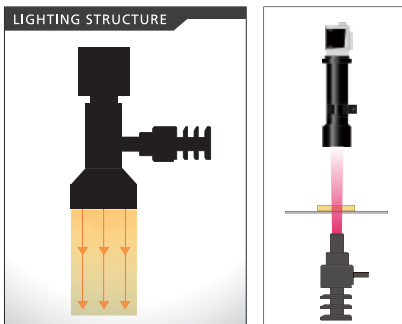
# IR Series



**[specification]**  
 Lineup: Ring/Bar/Transparent/Spot type, so on  
 Wavelength : IR850,940,1100,1200,1300,1450

**Feature:**  
 • High brightness with low power consumption by unique optical lens design, arrowing reduced output attenuation due to lighting heat generation.  
 • In the SWIR range lineup(1100nm ~), uniformated specifications and high brightness specifications available in accordance with the telecentric lens magnification.

**Application:**  
 • Silicon Conwafer pattern inspection  
 • alignment



Dark brown bottles  
 (left:vegetable oil, right:water)  
 Body:borosilicate glass  
 Cap:PP



White



Infrared(850nm)



Infrared(1450nm)

Divided lighting compatible with various shapes and sizes. Perfect for Computational Imaging.

## Segmented Ring Illumination Series



**[specification]**

Wavelength: R / B / W

Type: Low angle, Horizontal oriented Ring,  
Mult-position ring

**Feature:**

A lineup of 8CH LA ring, horizontally opposing ring and 16ch dome illumination. Possible to capture images necessary for image synthesis according to the shape of the object.

**Application:**

- Metal parts inspection, medical parts inspection

Ideal for mounting on robot arms! Lighting/camera control is possible with Just One Cable.

## RobotLight Series



**[specification]**

Wavelength: R / B / W

Type: 2 models: 1CH and 8CH

**Feature:**

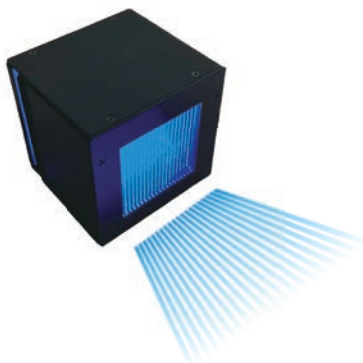
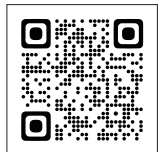
- Illumination and camera can be controlled with just one cable. Contributes to wiring savings.
- With the 8CH specification, it is possible to capture images with different segments, ideal for image composition without a controller.

**Application:**

- Metal parts inspection, robot picking

Realizing high-speed 3D inspection with LED stripe projection light source!

## 3D Phase-Shift Illuminator Series



**[specification]**

Wavelength: B

**Feature:**

- Achieves faster 3D measurement than DLP with switching response.
- Compared to lasers, etc., the LED light source is highly safe, reducing work risks.

# Company Profile

Company Name	Leimac Ltd.
Date of Establishment	May 1993
CEO	Jun Tanaka
Capital	20,000,000yen
Employees	about 150



## Business Activities

### ▶ Lighting Equipment

Development, manufacturing and sales of LED Illuminations and Controllers.

### ▶ FA System

Labor-saving machinery, transport machinery, the development of the control device, etc.

### ▶ Healthcare

Development and manufacturing of medical equipment.



## Why Choose Leimac?

Vast Selection of Over 50K models *No.1 in the industry*

Customization Capability *No.1 in the industry*

## Partners



# Illumination for Vision

**Leimac**  
● CHALLENGE & HIGH QUALITY

## Leimac Ltd.

Head Office	1551 Sazukawa-cho, Moriyama-City, Shiga, 524-0215, JAPAN TEL: +81-77-585-6767 FAX: +81-77-585-6790
Tokyo Office	2nd floor, Kameda Building 2-5-6 Uchikanda, Chiyoda-ku, Tokyo, 101-0047, JAPAN TEL: +81-3-6206-4838 FAX: +81-3-6206-4575
Osaka Office	8th floor, Shin-Osaka Chiyoda Building Bekkan 4-4-63, Miyahara, Yodogawa-ku, Osaka-City, Osaka, 532-0032, JAPAN TEL: +81-77-585-6771 (Head Office) FAX: +81-77-585-6773 (Head Office)
Sendai Office	5th floor, Sendai K Building 5-1-23 Tsutsujigaoka, Miyagino Ward, Sendai-City, Miyagi, 980-0014, JAPAN TEL: +81-3-6206-4838 (Tokyo Office) FAX: +81-3-6206-4575 (Tokyo Office)
Kumamoto Office	Brandall Residence Kikuyo #101 2525-5 Tsukure, Kikuyo-City, Kikuchi county, Kumamoto 869-1101, JAPAN TEL: +81-77-585-6771 (Head Office) FAX: +81-77-585-6773 (Head Office)
Nagoya Testing Room	#302, Mutsumi Building 1-8-7 Noritake, Nakamura-ku, Nagoya-City, Aichi, 453-0014, JAPAN TEL: +81-77-585-6771 (Head Office) FAX: +81-77-585-6773 (Head Office)

E-mail [contact@leimac.jp](mailto:contact@leimac.jp) HP <https://leimac.jp/en/>



- ※ The products featured in this catalog are industrial-grade items designed for integration into equipment, manufacturing processes, or for use within manufacturing facilities.
- ※ The data provided in this catalog is for reference purposes only and does not constitute a guarantee of product performance.
- ※ Specifications and designs of the products are subject to change without prior notice. Please be aware of this.

