

# TCCR12080

Bi-telecentric CORE lens for 1/2" detectors, magnification 0.080 x, C-mount

## SPECIFICATIONS

Part number (8)		TCCR12080
Magnification	(x)	0.080
Image shape dimension (9)	( $\emptyset$ , x mm)	$\emptyset=8.1$ , x=6.9
Phase adjustment (7)		Yes

### Object field of view (6)

with 1/3" detector (4.8 x 3.6 mm)	(mm x mm)	59.8 x 44.8
with 1/2.5" detector (5.70 x 4.28 mm)	(mm x mm)	71.0 x 53.2
with 1/2" detector (6.4 x 4.8 mm)	(mm x mm)	79.7 x 59.8
with 1/1.8" detector (7.13 x 5.37 mm)	(mm x mm)	86.0 x 66.8
with 2/3" - 5 MP detector (8.45 x 7.07 mm)	(mm x mm)	$\emptyset=101$ , x=86

### Optical specifications

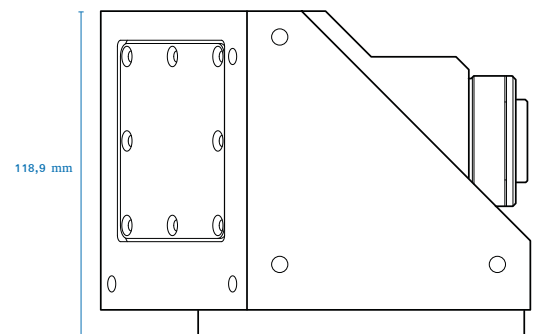
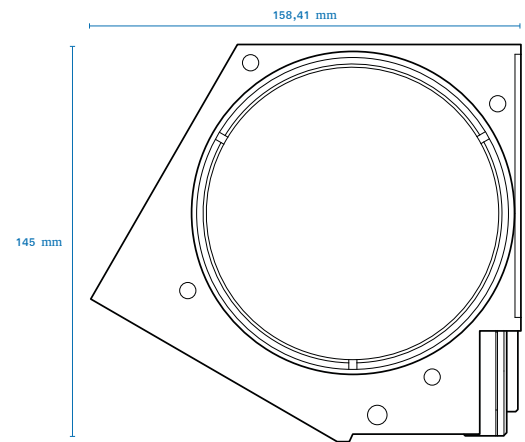
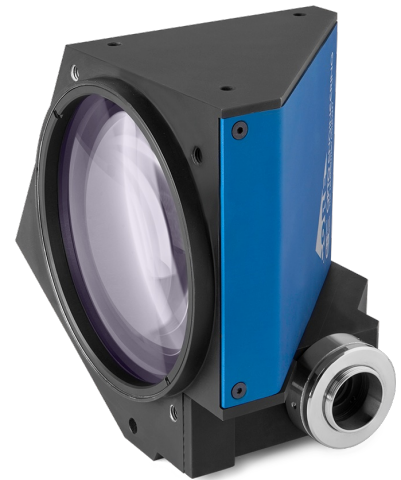
Working distance (1)	(mm)	226.7
wF/# (2)		8
Telecentricity typical (max) (3)	(deg)	< 0.03 (0.08)
Distortion typical (max) (4)	(%)	< 0.04 (0.10)
Field depth (5)	(mm)	104
CTF @ 70 lp/mm	(%)	> 50

### Dimensions

Mount		C
A	(mm)	119
B	(mm)	145
C	(mm)	159
Mass	(g)	2984

### Compatibility

LTCLCR080-x, CMHOCR080, CMPTCR080, LTCLHP080-x



## NOTES

- Working distance: distance between the front end of the mechanics and the object. Set this distance within +/- 3% of the nominal value for maximum resolution and minimum distortion.
- Working F-number (wF/#): the real F-number of a lens when used as a macro. Lenses with smaller apertures can be supplied on request.
- Maximum slope of chief rays inside the lens: when converted to millirad, it gives the maximum measurement error for any millimeter of object displacement. Typical (average production) values and maximum (guaranteed) values are listed.
- Percent deviation of the real image compared to an ideal, undistorted image: typical (average production) values and maximum (guaranteed) values are listed.
- At the borders of the field depth the image can be still used for measurement but, to get a perfectly sharp image, only half of the nominal field depth should be considered. Pixel size used for calculation is 5.5  $\mu$ m.
- In case the of vignetting, FOV dimensions are indicated with " $\emptyset =$  , x=" , where " $\emptyset =$ " stands for diameter and "x=" indicates the nominal FOV height and length (see [Tech Info](#) for related drawing).
- Indicates the availability of an integrated camera phase adjustment feature.
- Due to the special shape of TCCR120xx it might be necessary to check the mechanical compatibility with your camera.
- Indicates the dimensions and shape of image, where " $\emptyset =$ " stands for diameter and "x=" indicates the nominal image height and length ([Tech Info](#) for related drawing).

## COMPATIBLE PRODUCTS



LTCLHP080-R	Telecentric HP illuminator, beam diameter 100 mm, red
LTCLHP080-G	Telecentric HP illuminator, beam diameter 100 mm, green

---

<b>LTCLHP080-B</b>	Telecentric HP illuminator, beam diameter 100 mm, blue
<b>LTCLHP080-W</b>	Telecentric HP illuminator, beam diameter 100 mm, white

---



---

<b>LTCLCR080-R</b>	Telecentric CORE illuminator, beam dimensions $\varnothing = 98$ ; $x = 90$ , red
<b>LTCLCR080-G</b>	Telecentric CORE illuminator, beam dimensions $\varnothing = 98$ ; $x = 90$ , green
<b>LTCLCR080-W</b>	Telecentric CORE illuminator, beam dimensions $\varnothing = 98$ ; $x = 90$ , white

---



---

<b>CMHOCR080</b>	Clamping mechanics for CORE telecentric lenses and illuminators TCCRxx80 and LTCLCR080-x
------------------	--

---



---

<b>CMPTCR080</b>	Mechanical components designed for CORE telecentric lenses and illuminators $\varnothing 80$ mm
------------------	---

---