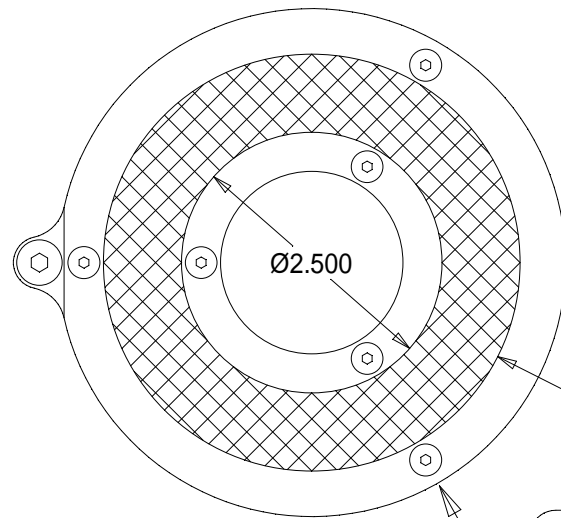


## TOP VIEW



Ø4.875±0.010

Ø4.000  
LIGHTED AREA

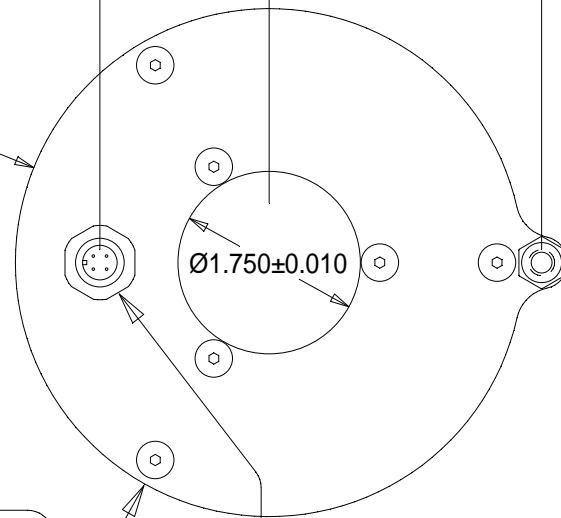
Ø2.500

THE FRONT PLATES AND  
BACK PLATE ARE 316 SS

## BOTTOM VIEW

1.625±0.010

2.616±0.010



Ø1.750±0.010

PIN 1 (BROWN)  
+24 VDC

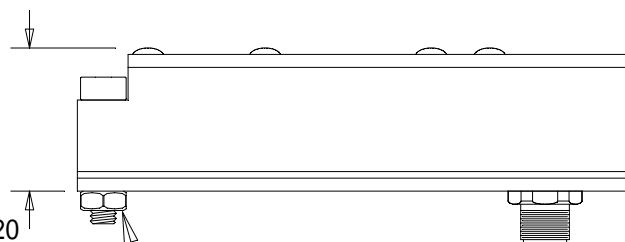
PIN 2 (WHITE)  
NOT USED

PIN 4 (BLACK)  
+24 VDC  
STROBE/CONT.

PIN 3 (BLUE)  
0 VDC

FEMALE CORD  
CONNECTOR

## SIDE VIEW



1.312±0.020

1.374±0.020

WHITE DELRIN  
HOUSING

316 SS 1/4-20  
STUD AND NUT  
FOR MOUNTING